

DATASHEET

AP3M1 Rabbit Polyclonal Antibody

CAT. NO. APA15077

KEY FEATURES

Target	AP3M1	Source / Host	Rabbit
Reactivity	Human, Mouse, Rat	Clonality	Polyclonal
Applications	WB	Conjugation	Unconjugated
Form / Buffer	Liquid in 0.42% Potassium phosphate, 0.87% Sodium chloride, pH 7.3, 30% glycerol, and 0.01% sodium azide.		Storage at -20°C

BACKGROUND

Part of the AP-3 complex, an adaptor-related complex which is not clathrin-associated. The complex is associated with the Golgi region as well as more peripheral structures. It facilitates the budding of vesicles from the Golgi membrane and may be directly involved in trafficking to lysosomes. In concert with the BLOC-1 complex, AP-3 is required to target cargos into vesicles assembled at cell bodies for delivery into neurites and nerve terminals.

APPLICATION

To ensure optimal assay performance, AREX recommends conducting reagent titration tailored to each testing system for optimal detection results.

WB	1:500 - 1:2000
----	----------------

*Results are sample-specific. Please refer to your local assay conditions and test parameters for reference.

PRODUCT OVERVIEW

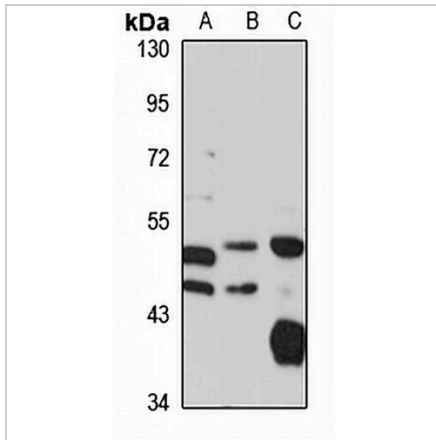
Description	Rabbit polyclonal antibody to AP3M1
Specificity	Recognizes endogenous levels of AP3M1 protein
Antibody Type	Primary antibody
Immunogen	Recombinant fusion protein of human AP3M1. The exact sequence is proprietary.
Purification	The antibody was purified by immunogen affinity chromatography.
Molecular Weight	Predicted: 46 kD; Observed: 47 kD
Form/Buffer	Liquid in 0.42% Potassium phosphate, 0.87% Sodium chloride, pH 7.3, 30% glycerol, and 0.01% sodium azide.
Alternative Names	AP-3 complex subunit mu-1; AP-3 adapter complex mu3A subunit; Adapter-related protein complex 3 subunit mu-1; Mu-adaptin 3A; Mu3A-adaptin
Gene Symbol	AP3M1
Entrez Gene	26985(Human); 55946(Mouse)
SwissProt	Q9Y2T2(Human); Q9JKC8(Mouse); P53676(Rat)

*AREX continuously optimizes our products. Webpage content may not reflect the latest updates. For inquiries, please contact info@arexbio.com or your local distributor.

*Clone Number, Reactivity, Source/Host and Clonality can be found in the product name and Key Features section above.

DATASHEET**AP3M1 Rabbit Polyclonal Antibody**

CAT. NO. APA15077

DATA

Western blot analysis of AP3M1 expression in 22Rv1 (A), mouse kidney (B), rat liver (C) whole cell lysates. (Predicted band size: 46 kD; Observed band size: 47 kD)

STORAGE

Store at 4°C short term. For long term storage, store at -20°C, avoiding freeze/thaw cycles.

NOTE

For Research Use Only. Not for diagnostic, therapeutics, prophylactic or in vivo use.