

DATASHEET

APPL2 Rabbit Polyclonal Antibody

CAT. NO. APA15084

KEY FEATURES

Target	APPL2	Source / Host	Rabbit
Reactivity	Human, Mouse, Rat	Clonality	Polyclonal
Applications	WB, IHC	Conjugation	Unconjugated
Form / Buffer	Liquid in 0.42% Potassium phosphate, 0.87% Sodium chloride, pH 7.3, 30% glycerol, and 0.01% sodium azide.		Storage at-20°C

BACKGROUND

Multifunctional adapter protein that binds to various membrane receptors, nuclear factors and signaling proteins to regulate many processes, such as cell proliferation, immune response, endosomal trafficking and cell metabolism . Regulates signaling pathway leading to cell proliferation through interaction with RAB5A and subunits of the NuRD/MeCP1 complex . Plays a role in immune response by modulating phagocytosis, inflammatory and innate immune responses. In macrophages, enhances Fc-gamma receptor-mediated phagocytosis through interaction with RAB31 leading to activation of PI3K/Akt signaling.

APPLICATION

To ensure optimal assay performance, AREX recommends conducting reagent titration tailored to each testing system for optimal detection results.

WB	1:500 - 1:2000
IHC	1:50 - 1:200

*Results are sample-specific. Please refer to your local assay conditions and test parameters for reference.

PRODUCT OVERVIEW

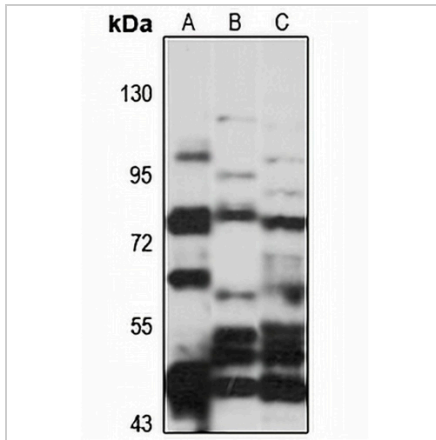
Description	Rabbit polyclonal antibody to APPL2
Specificity	Recognizes endogenous levels of APPL2 protein
Antibody Type	Primary antibody
Immunogen	Recombinant fusion protein of human APPL2. The exact sequence is proprietary.
Purification	The antibody was purified by immunogen affinity chromatography.
Molecular Weight	Predicted: 69; Observed: 74 kD
Form/Buffer	Liquid in 0.42% Potassium phosphate, 0.87% Sodium chloride, pH 7.3, 30% glycerol, and 0.01% sodium azide.
Alternative Names	DIP13B; DCC-interacting protein 13-beta; Dip13-beta; Adapter protein containing PH domain PTB domain and leucine zipper motif 2
Gene Symbol	APPL2
Entrez Gene	55198(Human); 216190(Mouse)
SwissProt	Q8NEU8(Human); Q8K3G9(Mouse)

*AREX continuously optimizes our products. Webpage content may not reflect the latest updates. For inquiries, please contact info@arexbio.com or your local distributor.

*Clone Number, Reactivity, Source/Host and Clonality can be found in the product name and Key Features section above.

DATASHEET**APPL2 Rabbit Polyclonal Antibody**

CAT. NO. APA15084

DATA

Western blot analysis of APPL2 expression in HT29 (A), mouse heart (B), rat pancreas (C) whole cell lysates. (Predicted band size: 69; 74; 75 kD; Observed band size: 74 kD)

STORAGE

Store at 4°C short term. For long term storage, store at -20°C, avoiding freeze/thaw cycles.

NOTE

For Research Use Only. Not for diagnostic, therapeutics, prophylactic or in vivo use.