

DATASHEET

ARFGAP2 Rabbit Polyclonal Antibody

CAT. NO. APA15088

KEY FEATURES

Target	ARFGAP2	Source / Host	Rabbit
Reactivity	Human, Mouse, Rat	Clonality	Polyclonal
Applications	WB, IF/ICC	Conjugation	Unconjugated
Form / Buffer	Liquid in 0.42% Potassium phosphate, 0.87% Sodium chloride, pH 7.3, 30% glycerol, and 0.01% sodium azide.		Storage at -20°C

BACKGROUND

GTPase-activating protein (GAP) for ADP ribosylation factor 1 (ARF1). Implicated in coatamer-mediated protein transport between the Golgi complex and the endoplasmic reticulum. Hydrolysis of ARF1-bound GTP may lead to dissociation of coatamer from Golgi-derived membranes to allow fusion with target membranes.

APPLICATION

To ensure optimal assay performance, AREX recommends conducting reagent titration tailored to each testing system for optimal detection results.

WB	1:500 - 1:2000
IF/ICC	1:50 - 1:200

*Results are sample-specific. Please refer to your local assay conditions and test parameters for reference.

PRODUCT OVERVIEW

Description	Rabbit polyclonal antibody to ARFGAP2
Specificity	Recognizes endogenous levels of ARFGAP2 protein
Antibody Type	Primary antibody
Immunogen	Recombinant fusion protein of human ARFGAP2. The exact sequence is proprietary.
Purification	The antibody was purified by immunogen affinity chromatography.
Molecular Weight	Predicted: 56 kD; Observed: 57 kD
Form/Buffer	Liquid in 0.42% Potassium phosphate, 0.87% Sodium chloride, pH 7.3, 30% glycerol, and 0.01% sodium azide.
Alternative Names	ZNF289; ADP-ribosylation factor GTPase-activating protein 2; ARF GAP 2; GTPase-activating protein ZNF289; Zinc finger protein 289
Gene Symbol	ARFGAP2
Entrez Gene	84364(Human); 77038(Mouse); 362162(Rat)
SwissProt	Q8N6H7(Human); Q99K28(Mouse); Q3MID3(Rat)

*AREX continuously optimizes our products. Webpage content may not reflect the latest updates. For inquiries, please contact info@arexbio.com or your local distributor.

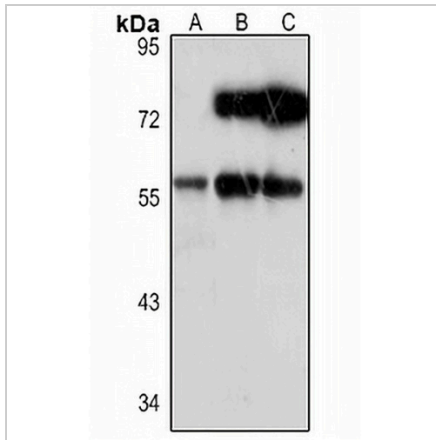
*Clone Number, Reactivity, Source/Host and Clonality can be found in the product name and Key Features section above.

DATASHEET

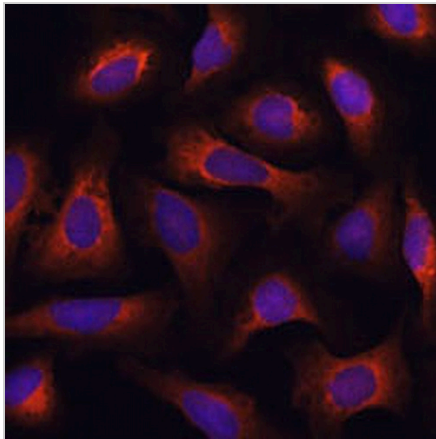
ARFGAP2 Rabbit Polyclonal Antibody

CAT. NO. APA15088

DATA



Western blot analysis of ARFGAP2 expression in THP1 (A), mouse kidney (B), rat lung (C) whole cell lysates. (Predicted band size: 56 kD; Observed band size: 57 kD)



Immunofluorescent analysis of ARFGAP2 staining in U2OS cells. Formalin-fixed cells were permeabilized with 0.1% Triton X-100 in TBS for 5-10 minutes and blocked with 3% BSA-PBS for 30 minutes at room temperature. Cells were probed with the primary antibody in 3% BSA-PBS and incubated overnight at 4 °C in a humidified chamber. Cells were washed with PBST and incubated with a AREX® Fluor 594-conjugated secondary antibody (red) in PBS at room temperature in the dark. DAPI was used to stain the cell nuclei (blue).

STORAGE

Store at 4°C short term. For long term storage, store at -20°C, avoiding freeze/thaw cycles.

NOTE

For Research Use Only. Not for diagnostic, therapeutics, prophylactic or in vivo use.