

DATASHEET

ARFRP1 Rabbit Polyclonal Antibody

CAT. NO. APA15089

KEY FEATURES

Target	ARFRP1	Source / Host	Rabbit
Reactivity	Human, Mouse, Rat	Clonality	Polyclonal
Applications	WB	Conjugation	Unconjugated
Form / Buffer	Liquid in 0.42% Potassium phosphate, 0.87% Sodium chloride, pH 7.3, 30% glycerol, and 0.01% sodium azide.		Storage at -20°C

BACKGROUND

Trans-Golgi-associated GTPase that regulates protein sorting. Controls the targeting of ARL1 and its effector to the trans-Golgi. Required for the lipidation of chylomicrons in the intestine and required for VLDL lipidation in the liver.

APPLICATION

To ensure optimal assay performance, AREX recommends conducting reagent titration tailored to each testing system for optimal detection results.

WB	1:500 - 1:2000
----	----------------

*Results are sample-specific. Please refer to your local assay conditions and test parameters for reference.

PRODUCT OVERVIEW

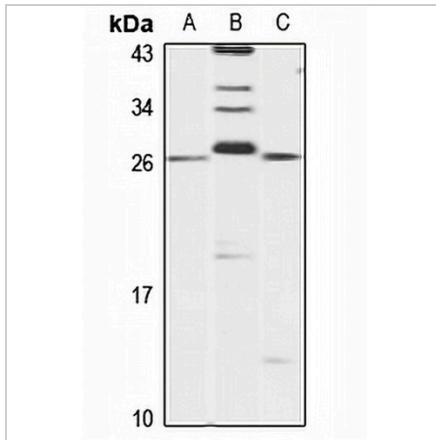
Description	Rabbit polyclonal antibody to ARFRP1
Specificity	Recognizes endogenous levels of ARFRP1 protein
Antibody Type	Primary antibody
Immunogen	Recombinant fusion protein of human ARFRP1. The exact sequence is proprietary.
Purification	The antibody was purified by immunogen affinity chromatography.
Molecular Weight	Predicted: 13; Observed: 25 kD
Form/Buffer	Liquid in 0.42% Potassium phosphate, 0.87% Sodium chloride, pH 7.3, 30% glycerol, and 0.01% sodium azide.
Alternative Names	ARP1; ADP-ribosylation factor-related protein 1; ARF-related protein 1; ARP
Gene Symbol	ARFRP1
Entrez Gene	10139(Human); 76688(Mouse); 117051(Rat)
SwissProt	Q13795(Human); Q8BXL7(Mouse); Q63055(Rat)

*AREX continuously optimizes our products. Webpage content may not reflect the latest updates. For inquiries, please contact info@arexbio.com or your local distributor.

*Clone Number, Reactivity, Source/Host and Clonality can be found in the product name and Key Features section above.

DATASHEET**ARFRP1 Rabbit Polyclonal Antibody**

CAT. NO. APA15089

DATA

Western blot analysis of ARFRP1 expression in HEK293T (A), mouse brain (B), rat lung (C) whole cell lysates. (Predicted band size: 13; 17; 19; 22 kD; Observed band size: 25 kD)

STORAGE

Store at 4°C short term. For long term storage, store at -20°C, avoiding freeze/thaw cycles.

NOTE

For Research Use Only. Not for diagnostic, therapeutics, prophylactic or in vivo use.