

DATASHEET

ARL1 Rabbit Polyclonal Antibody

CAT. NO. APA15092

KEY FEATURES

Target	ARL1	Source / Host	Rabbit
Reactivity	Human, Mouse, Rat	Clonality	Polyclonal
Applications	WB, IHC, IF/ICC	Conjugation	Unconjugated
Form / Buffer	Liquid in 0.42% Potassium phosphate, 0.87% Sodium chloride, pH 7.3, 30% glycerol, and 0.01% sodium azide.		Storage at-20°C

BACKGROUND

GTP-binding protein that recruits several effectors, such as golgins, arfaptins and Arf-GEFs to the trans-Golgi network, and modulates their functions at the Golgi complex . Plays thereby a role in a wide range of fundamental cellular processes, including cell polarity, innate immunity, or protein secretion mediated by arfaptins, which were shown to play a role in maintaining insulin secretion from pancreatic beta cells .

APPLICATION

To ensure optimal assay performance, AREX recommends conducting reagent titration tailored to each testing system for optimal detection results.

WB	1:500 - 1:2000
IHC	1:50 - 1:200
IF/ICC	1:50 - 1:200

*Results are sample-specific. Please refer to your local assay conditions and test parameters for reference.

PRODUCT OVERVIEW

Description	Rabbit polyclonal antibody to ARL1
Specificity	Recognizes endogenous levels of ARL1 protein
Antibody Type	Primary antibody
Immunogen	Recombinant fusion protein of human ARL1. The exact sequence is proprietary.
Purification	The antibody was purified by immunogen affinity chromatography.
Molecular Weight	Predicted: 18; Observed: 20 kD
Form/Buffer	Liquid in 0.42% Potassium phosphate, 0.87% Sodium chloride, pH 7.3, 30% glycerol, and 0.01% sodium azide.
Alternative Names	ADP-ribosylation factor-like protein 1
Gene Symbol	ARL1
Entrez Gene	400(Human); 104303(Mouse); 64187(Rat)
SwissProt	P40616(Human); P61211(Mouse); P61212(Rat)

*AREX continuously optimizes our products. Webpage content may not reflect the latest updates. For inquiries, please contact info@arexbio.com or your local distributor.

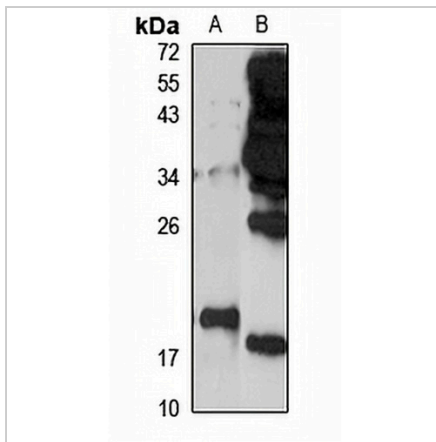
*Clone Number, Reactivity, Source/Host and Clonality can be found in the product name and Key Features section above.

DATASHEET

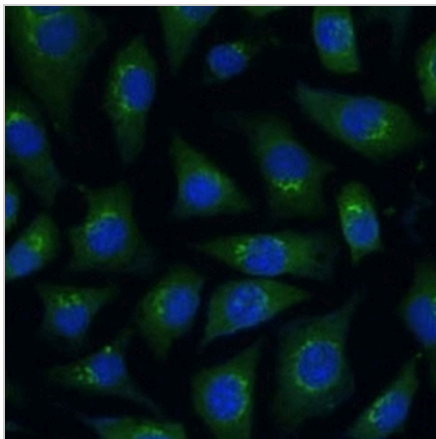
ARL1 Rabbit Polyclonal Antibody

CAT. NO. APA15092

DATA



Western blot analysis of ARL1 expression in A549 (A), mouse brain (B) whole cell lysates. (Predicted band size: 18; 20 kD; Observed band size: 20 kD)



Immunofluorescent analysis of ARL1 staining in L929 cells. Formalin-fixed cells were permeabilized with 0.1% Triton X-100 in TBS for 5-10 minutes and blocked with 3% BSA-PBS for 30 minutes at room temperature. Cells were probed with the primary antibody in 3% BSA-PBS and incubated overnight at 4 °C in a humidified chamber. Cells were washed with PBST and incubated with a Alexa Fluor 488-conjugated secondary antibody (green) in PBS at room temperature in the dark.

STORAGE

Store at 4°C short term. For long term storage, store at -20°C, avoiding freeze/thaw cycles.

NOTE

For Research Use Only. Not for diagnostic, therapeutics, prophylactic or in vivo use.