

DATASHEET

ARL13B Rabbit Polyclonal Antibody

CAT. NO. APA15093

KEY FEATURES

Target	ARL13B	Source / Host	Rabbit
Reactivity	Human, Mouse	Clonality	Polyclonal
Applications	WB, IF/ICC	Conjugation	Unconjugated
Form / Buffer	Liquid in 0.42% Potassium phosphate, 0.87% Sodium chloride, pH 7.3, 30% glycerol, and 0.01% sodium azide.		Storage at -20°C

BACKGROUND

Cilium-specific protein required to control the microtubule-based, ciliary axoneme structure. May act by maintaining the association between IFT subcomplexes A and B. Binds GTP but is not able to hydrolyze it; the GTPase activity remains unclear. Required to pattern the neural tube. Involved in cerebral cortex development: required for the initial formation of a polarized radial glial scaffold, the first step in the construction of the cerebral cortex, by regulating ciliary signaling. Regulates the migration and placement of postmitotic interneurons in the developing cerebral cortex. Plays a role in ciliar trafficking of phosphatidylinositol phosphatase INPP5E in ciliogenesis. May regulate ARF6- and RAB22A-dependent endocytic recycling traffic.

APPLICATION

To ensure optimal assay performance, AREX recommends conducting reagent titration tailored to each testing system for optimal detection results.

WB	1:500 - 1:2000
IF/ICC	1:50 - 1:200

*Results are sample-specific. Please refer to your local assay conditions and test parameters for reference.

PRODUCT OVERVIEW

Description	Rabbit polyclonal antibody to ARL13B
Specificity	Recognizes endogenous levels of ARL13B protein
Antibody Type	Primary antibody
Immunogen	Recombinant fusion protein of human ARL13B. The exact sequence is proprietary.
Purification	The antibody was purified by immunogen affinity chromatography.
Molecular Weight	Predicted: 36; Observed: 49 kD
Form/Buffer	Liquid in 0.42% Potassium phosphate, 0.87% Sodium chloride, pH 7.3, 30% glycerol, and 0.01% sodium azide.
Alternative Names	ARL2L1; ADP-ribosylation factor-like protein 13B; ADP-ribosylation factor-like protein 2-like 1; ARL2-like protein 1
Gene Symbol	ARL13B
Entrez Gene	200894(Human); 68146(Mouse)
SwissProt	Q3SXY8(Human); Q640N2(Mouse)

*AREX continuously optimizes our products. Webpage content may not reflect the latest updates. For inquiries, please contact info@arexbio.com or your local distributor.

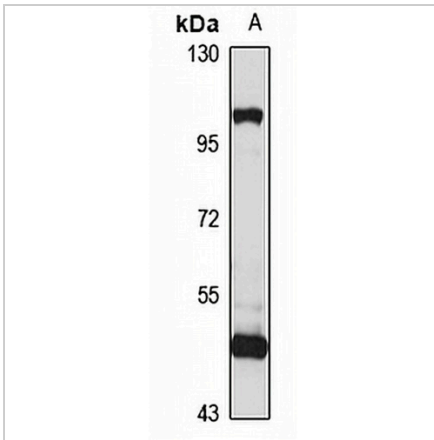
*Clone Number, Reactivity, Source/Host and Clonality can be found in the product name and Key Features section above.

DATASHEET

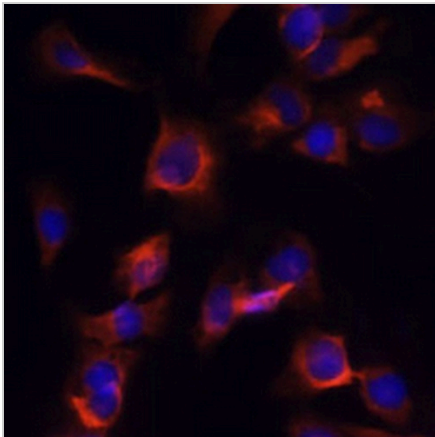
ARL13B Rabbit Polyclonal Antibody

CAT. NO. APA15093

DATA



Western blot analysis of ARL13B expression in SKOV3 (A) whole cell lysates. (Predicted band size: 36; 37; 48 kD; Observed band size: 49 kD)



Immunofluorescent analysis of ARL13B staining in C6 cells. Formalin-fixed cells were permeabilized with 0.1% Triton X-100 in TBS for 5-10 minutes and blocked with 3% BSA-PBS for 30 minutes at room temperature. Cells were probed with the primary antibody in 3% BSA-PBS and incubated overnight at 4 °C in a humidified chamber. Cells were washed with PBST and incubated with a AREX® Fluor 594-conjugated secondary antibody (red) in PBS at room temperature in the dark. DAPI was used to stain the cell nuclei (blue).

STORAGE

Store at 4°C short term. For long term storage, store at -20°C, avoiding freeze/thaw cycles.

NOTE

For Research Use Only. Not for diagnostic, therapeutics, prophylactic or in vivo use.