

DATASHEET

ARL3 Rabbit Polyclonal Antibody

CAT. NO. APA15094

KEY FEATURES

Target	ARL3	Source / Host	Rabbit
Reactivity	Human, Mouse, Rat	Clonality	Polyclonal
Applications	WB, IHC, IF/ICC	Conjugation	Unconjugated
Form / Buffer	Liquid in 0.42% Potassium phosphate, 0.87% Sodium chloride, pH 7.3, 30% glycerol, and 0.01% sodium azide.		Storage at -20°C

BACKGROUND

Small GTP-binding protein which cycles between an inactive GDP-bound and an active GTP-bound form, and the rate of cycling is regulated by guanine nucleotide exchange factors (GEF) and GTPase-activating proteins (GAP) and GTPase-activating proteins (GAP) . Required for normal cytokinesis and cilia signaling . Requires assistance from GTPase-activating proteins (GAPs) like RP2 and PDE6D, in order to cycle between inactive GDP-bound and active GTP-bound forms. Required for targeting proteins to the cilium, including myristoylated NPHP3 and prenylated INPP5E . Targets NPHP3 to the ciliary membrane by releasing myristoylated NPHP3 from UNC119B cargo adapter into the cilium . Required for PKD1:PKD2 complex targeting from the trans-Golgi network to the cilium .

APPLICATION

To ensure optimal assay performance, AREX recommends conducting reagent titration tailored to each testing system for optimal detection results.

WB	1:500 - 1:2000
IHC	1:50 - 1:200
IF/ICC	1:50 - 1:200

*Results are sample-specific. Please refer to your local assay conditions and test parameters for reference.

PRODUCT OVERVIEW

Description	Rabbit polyclonal antibody to ARL3
Specificity	Recognizes endogenous levels of ARL3 protein
Antibody Type	Primary antibody
Immunogen	Recombinant fusion protein of human ARL3. The exact sequence is proprietary.
Purification	The antibody was purified by immunogen affinity chromatography.
Molecular Weight	Predicted: 20 kD; Observed: 20 kD
Form/Buffer	Liquid in 0.42% Potassium phosphate, 0.87% Sodium chloride, pH 7.3, 30% glycerol, and 0.01% sodium azide.
Alternative Names	ARFL3; ADP-ribosylation factor-like protein 3
Gene Symbol	ARL3
Entrez Gene	403(Human); 56350(Mouse); 64664(Rat)
SwissProt	P36405(Human); Q9WUL7(Mouse); P37996(Rat)

*AREX continuously optimizes our products. Webpage content may not reflect the latest updates. For inquiries, please contact info@arexbio.com or your local distributor.

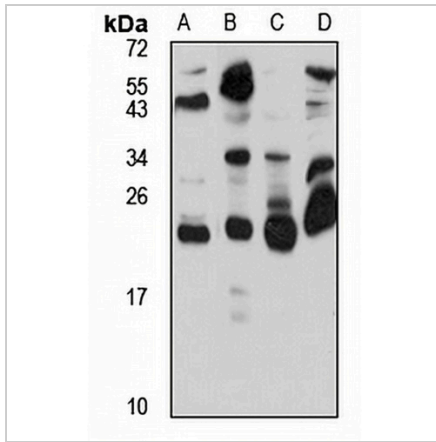
*Clone Number, Reactivity, Source/Host and Clonality can be found in the product name and Key Features section above.

DATASHEET

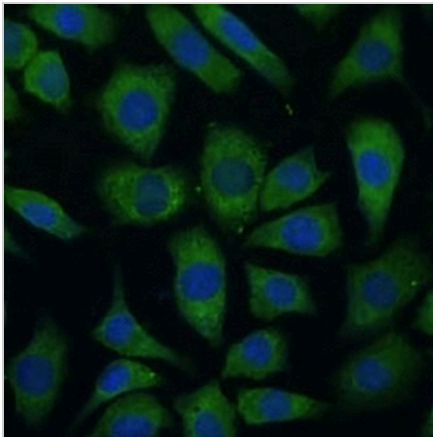
ARL3 Rabbit Polyclonal Antibody

CAT. NO. APA15094

DATA



Western blot analysis of ARL3 expression in HeLa (A), mouse heart (B), mouse kidney (C), rat brain (D) whole cell lysates. (Predicted band size: 20 kD; Observed band size: 20 kD)



Immunofluorescent analysis of ARL3 staining in L929 cells. Formalin-fixed cells were permeabilized with 0.1% Triton X-100 in TBS for 5-10 minutes and blocked with 3% BSA-PBS for 30 minutes at room temperature. Cells were probed with the primary antibody in 3% BSA-PBS and incubated overnight at 4 °C in a humidified chamber. Cells were washed with PBST and incubated with a Alexa Fluor 488-conjugated secondary antibody (green) in PBS at room temperature in the dark.

STORAGE

Store at 4°C short term. For long term storage, store at -20°C, avoiding freeze/thaw cycles.

NOTE

For Research Use Only. Not for diagnostic, therapeutics, prophylactic or in vivo use.