

DATASHEET

ARL8B Rabbit Polyclonal Antibody

CAT. NO. APA15096

KEY FEATURES

Target	ARL8B	Source / Host	Rabbit
Reactivity	Human, Mouse, Rat	Clonality	Polyclonal
Applications	WB, IF/ICC	Conjugation	Unconjugated
Form / Buffer	Liquid in 0.42% Potassium phosphate, 0.87% Sodium chloride, pH 7.3, 30% glycerol, and 0.01% sodium azide.		Storage at -20°C

BACKGROUND

Small GTPase which cycles between active GTP-bound and inactive GDP-bound states . In its active state, binds to a variety of effector proteins playing a key role in the regulation of lysosomal positioning which is important for nutrient sensing, natural killer cell-mediated cytotoxicity and antigen presentation. Along with its effectors, orchestrates lysosomal transport and fusion . Localizes specifically to lysosomal membranes and mediates anterograde lysosomal motility by recruiting PLEKHM2, which in turn recruits the motor protein kinesin-1 on lysosomes. Required for lysosomal and cytolytic granule exocytosis . Critical factor involved in NK cell-mediated cytotoxicity.

APPLICATION

To ensure optimal assay performance, AREX recommends conducting reagent titration tailored to each testing system for optimal detection results.

WB	1:500 - 1:2000
IF/ICC	1:50 - 1:200

*Results are sample-specific. Please refer to your local assay conditions and test parameters for reference.

PRODUCT OVERVIEW

Description	Rabbit polyclonal antibody to ARL8B
Specificity	Recognizes endogenous levels of ARL8B protein
Antibody Type	Primary antibody
Immunogen	Recombinant fusion protein of human ARL8B. The exact sequence is proprietary.
Purification	The antibody was purified by immunogen affinity chromatography.
Molecular Weight	Predicted: 18; Observed: 21 kD
Form/Buffer	Liquid in 0.42% Potassium phosphate, 0.87% Sodium chloride, pH 7.3, 30% glycerol, and 0.01% sodium azide.
Alternative Names	ARL10C; GIE1; ADP-ribosylation factor-like protein 8B; ADP-ribosylation factor-like protein 10C; Novel small G protein indispensable for equal chromosome segregation 1
Gene Symbol	ARL8B
Entrez Gene	55207(Human); 67166(Mouse); 500282(Rat)
SwissProt	Q9NVJ2(Human); Q9CQW2(Mouse); Q66HA6(Rat)

*AREX continuously optimizes our products. Webpage content may not reflect the latest updates. For inquiries, please contact info@arexbio.com or your local distributor.

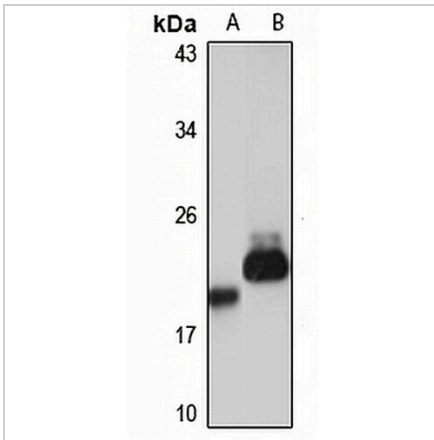
*Clone Number, Reactivity, Source/Host and Clonality can be found in the product name and Key Features section above.

DATASHEET

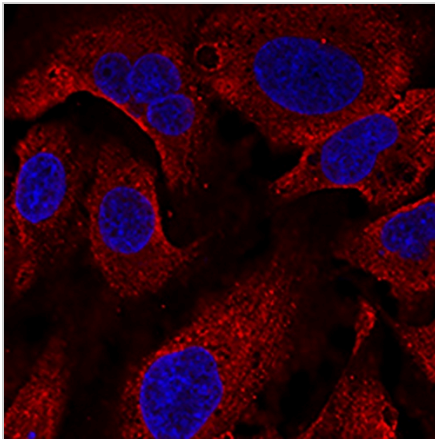
ARL8B Rabbit Polyclonal Antibody

CAT. NO. APA15096

DATA



Western blot analysis of ARL8B expression in U87MG (A), mouse brain (B) whole cell lysates. (Predicted band size: 18; 21 kD; Observed band size: 21 kD)



Immunofluorescent analysis of ARL8B staining in U2OS cells. Formalin-fixed cells were permeabilized with 0.1% Triton X-100 in TBS for 5-10 minutes and blocked with 3% BSA-PBS for 30 minutes at room temperature. Cells were probed with the primary antibody in 3% BSA-PBS and incubated overnight at 4 °C in a humidified chamber. Cells were washed with PBST and incubated with a AREX® Fluor 594-conjugated secondary antibody (red) in PBS at room temperature in the dark. DAPI was used to stain the cell nuclei (blue).

STORAGE

Store at 4°C short term. For long term storage, store at -20°C, avoiding freeze/thaw cycles.

NOTE

For Research Use Only. Not for diagnostic, therapeutics, prophylactic or in vivo use.