

**DATASHEET**

**ASB-2 Rabbit Polyclonal Antibody**

CAT. NO. APA15104

**KEY FEATURES**

Target	ASB-2	Source / Host	Rabbit
Reactivity	Human, Rat	Clonality	Polyclonal
Applications	WB	Conjugation	Unconjugated
Form / Buffer	Liquid in 0.42% Potassium phosphate, 0.87% Sodium chloride, pH 7.3, 30% glycerol, and 0.01% sodium azide.		Storage at -20°C

**BACKGROUND**

Substrate-recognition component of a SCF-like ECS (Elongin-Cullin-SOCS-box protein) E3 ubiquitin-protein ligase complex which mediates the ubiquitination and subsequent proteasomal degradation of target proteins E3 ubiquitin-protein ligase complex which mediates the ubiquitination and subsequent proteasomal degradation of target proteins . Mediates Notch-induced ubiquitination and degradation of substrates including TCF3/E2A and JAK2 . Required during embryonic heart development for complete heart looping . Required for cardiomyocyte differentiation . Specifically promotes the ubiquitination of SMAD9 and targets it for proteasomal degradation, leading to avoid excessive accumulation of SMAD9 .

**APPLICATION**

To ensure optimal assay performance, AREX recommends conducting reagent titration tailored to each testing system for optimal detection results.

WB	1:500 - 1:2000
----	----------------

\*Results are sample-specific. Please refer to your local assay conditions and test parameters for reference.

**PRODUCT OVERVIEW**

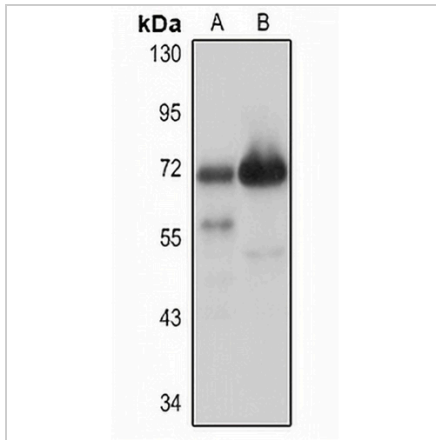
Description	Rabbit polyclonal antibody to ASB-2
Specificity	Recognizes endogenous levels of ASB-2 protein
Antibody Type	Primary antibody
Immunogen	Recombinant fusion protein of human ASB-2. The exact sequence is proprietary.
Purification	The antibody was purified by immunogen affinity chromatography.
Molecular Weight	Predicted: 65 kD; Observed: 65 kD
Form/Buffer	Liquid in 0.42% Potassium phosphate, 0.87% Sodium chloride, pH 7.3, 30% glycerol, and 0.01% sodium azide.
Alternative Names	Ankyrin repeat and SOCS box protein 2; ASB-2
Gene Symbol	ASB2
Entrez Gene	51676(Human); 299266(Rat)
SwissProt	Q96Q27(Human); Q5U2S6(Rat)

\*AREX continuously optimizes our products. Webpage content may not reflect the latest updates. For inquiries, please contact [info@arexbio.com](mailto:info@arexbio.com) or your local distributor.

\*Clone Number, Reactivity, Source/Host and Clonality can be found in the product name and Key Features section above.

**DATASHEET****ASB-2 Rabbit Polyclonal Antibody**

CAT. NO. APA15104

**DATA**

Western blot analysis of ASB-2 expression in HEK293T (A), rat kidney (B) whole cell lysates. (Predicted band size: 65 kD; Observed band size: 65 kD)

**STORAGE**

Store at 4°C short term. For long term storage, store at -20°C, avoiding freeze/thaw cycles.

**NOTE**

For Research Use Only. Not for diagnostic, therapeutics, prophylactic or in vivo use.