

**DATASHEET**

**ASCC1 Rabbit Polyclonal Antibody**

CAT. NO. APA15106

**KEY FEATURES**

Target	ASCC1	Source / Host	Rabbit
Reactivity	Human, Mouse, Rat	Clonality	Polyclonal
Applications	WB, IF/ICC	Conjugation	Unconjugated
Form / Buffer	Liquid in 0.42% Potassium phosphate, 0.87% Sodium chloride, pH 7.3, 30% glycerol, and 0.01% sodium azide.		Storage at -20°C

**BACKGROUND**

Plays a role in DNA damage repair as component of the ASCC complex . Part of the ASC-1 complex that enhances NF-kappa-B, SRF and AP1 transactivation . In cells responding to gastrin-activated paracrine signals, it is involved in the induction of SERPINB2 expression by gastrin. May also play a role in the development of neuromuscular junction.

**APPLICATION**

To ensure optimal assay performance, AREX recommends conducting reagent titration tailored to each testing system for optimal detection results.

WB	1:500 - 1:2000
IF/ICC	1:50 - 1:200

\*Results are sample-specific. Please refer to your local assay conditions and test parameters for reference.

**PRODUCT OVERVIEW**

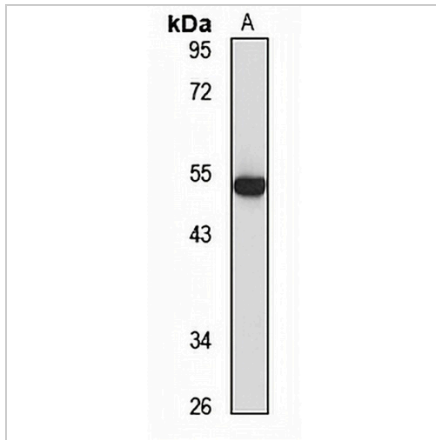
Description	Rabbit polyclonal antibody to ASCC1
Specificity	Recognizes endogenous levels of ASCC1 protein
Antibody Type	Primary antibody
Immunogen	Recombinant fusion protein of human ASCC1. The exact sequence is proprietary.
Purification	The antibody was purified by immunogen affinity chromatography.
Molecular Weight	Predicted: 41; Observed: 46 kD
Form/Buffer	Liquid in 0.42% Potassium phosphate, 0.87% Sodium chloride, pH 7.3, 30% glycerol, and 0.01% sodium azide.
Alternative Names	Activating signal cointegrator 1 complex subunit 1; ASC-1 complex subunit p50; Trip4 complex subunit p50
Gene Symbol	ASCC1
Entrez Gene	51008(Human); 69090(Mouse)
SwissProt	Q8N9N2(Human); Q9D8Z1(Mouse)

\*AREX continuously optimizes our products. Webpage content may not reflect the latest updates. For inquiries, please contact [info@arexbio.com](mailto:info@arexbio.com) or your local distributor.

\*Clone Number, Reactivity, Source/Host and Clonality can be found in the product name and Key Features section above.

**DATASHEET****ASCC1 Rabbit Polyclonal Antibody**

CAT. NO. APA15106

**DATA**

Western blot analysis of ASCC1 expression in rat pancreas (A) whole cell lysates.  
(Predicted band size: 41; 45 kD; Observed band size: 46 kD)

**STORAGE**

Store at 4°C short term. For long term storage, store at -20°C, avoiding freeze/thaw cycles.

**NOTE**

For Research Use Only. Not for diagnostic, therapeutics, prophylactic or in vivo use.