

**DATASHEET**

**ASCC2 Rabbit Polyclonal Antibody**

CAT. NO. APA15107

**KEY FEATURES**

Target	ASCC2	Source / Host	Rabbit
Reactivity	Human, Mouse, Rat	Clonality	Polyclonal
Applications	WB, IHC	Conjugation	Unconjugated
Form / Buffer	Liquid in 0.42% Potassium phosphate, 0.87% Sodium chloride, pH 7.3, 30% glycerol, and 0.01% sodium azide.		Storage at -20°C

**BACKGROUND**

Ubiquitin-binding protein involved in DNA repair and rescue of stalled ribosomes . Plays a role in DNA damage repair as component of the ASCC complex . Recruits ASCC3 and ALKBH3 to sites of DNA damage by binding to polyubiquitinated proteins that have 'Lys-63'-linked polyubiquitin chains . Part of the ASC-1 complex that enhances NF-kappa-B, SRF and AP1 transactivation . Involved in activation of the ribosome quality control (RQC) pathway, a pathway that degrades nascent peptide chains during problematic translation . Specifically recognizes and binds RPS20/uS10 ubiquitinated by ZNF598, promoting recruitment of the RQT (ribosome quality control trigger) complex on stalled ribosomes, followed by disassembly of stalled ribosomes .

**APPLICATION**

To ensure optimal assay performance, AREX recommends conducting reagent titration tailored to each testing system for optimal detection results.

WB	1:500 - 1:2000
IHC	1:50 - 1:200

\*Results are sample-specific. Please refer to your local assay conditions and test parameters for reference.

**PRODUCT OVERVIEW**

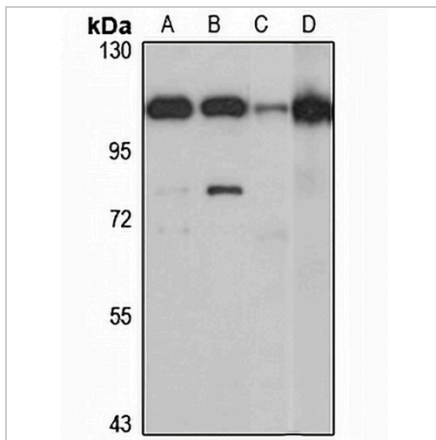
Description	Rabbit polyclonal antibody to ASCC2
Specificity	Recognizes endogenous levels of ASCC2 protein
Antibody Type	Primary antibody
Immunogen	Recombinant fusion protein of human ASCC2. The exact sequence is proprietary.
Purification	The antibody was purified by immunogen affinity chromatography.
Molecular Weight	Predicted: 41; Observed: 110 kD
Form/Buffer	Liquid in 0.42% Potassium phosphate, 0.87% Sodium chloride, pH 7.3, 30% glycerol, and 0.01% sodium azide.
Alternative Names	ASC1P100; Activating signal cointegrator 1 complex subunit 2; ASC-1 complex subunit p100; Trip4 complex subunit p100
Gene Symbol	ASCC2
Entrez Gene	84164(Human); 75452(Mouse)
SwissProt	Q9H1I8(Human); Q91WR3(Mouse)

\*AREX continuously optimizes our products. Webpage content may not reflect the latest updates. For inquiries, please contact [info@arexbio.com](mailto:info@arexbio.com) or your local distributor.

\*Clone Number, Reactivity, Source/Host and Clonality can be found in the product name and Key Features section above.

**DATASHEET****ASCC2 Rabbit Polyclonal Antibody**

CAT. NO. APA15107

**DATA**

Western blot analysis of ASCC2 expression in HepG2 (A), A431 (B), mouse eye (C), rat pancreas (D) whole cell lysates. (Predicted band size: 41; 77; 86 kD; Observed band size: 110 kD)

**STORAGE**

Store at 4°C short term. For long term storage, store at -20°C, avoiding freeze/thaw cycles.

**NOTE**

For Research Use Only. Not for diagnostic, therapeutics, prophylactic or in vivo use.