

DATASHEET

ASCL4 Rabbit Polyclonal Antibody

CAT. NO. APA15108

KEY FEATURES

| | | | |
|---------------|-----------------------------------------------------------------------------------------------------------|---------------|--------------------|
| Target | ASCL4 | Source / Host | Rabbit |
| Reactivity | Human, Mouse, Rat | Clonality | Polyclonal |
| Applications | WB, IHC | Conjugation | Unconjugated |
| Form / Buffer | Liquid in 0.42% Potassium phosphate, 0.87% Sodium chloride, pH 7.3, 30% glycerol, and 0.01% sodium azide. | | Storage at-20°C |

BACKGROUND

Could be a transcriptional regulator involved in skin development.

APPLICATION

To ensure optimal assay performance, AREX recommends conducting reagent titration tailored to each testing system for optimal detection results.

| | |
|-----|----------------|
| WB | 1:500 - 1:2000 |
| IHC | 1:50 - 1:200 |

*Results are sample-specific. Please refer to your local assay conditions and test parameters for reference.

PRODUCT OVERVIEW

| | |
|-------------------|-----------------------------------------------------------------------------------------------------------------------------------------|
| Description | Rabbit polyclonal antibody to ASCL4 |
| Specificity | Recognizes endogenous levels of ASCL4 protein |
| Antibody Type | Primary antibody |
| Immunogen | Recombinant fusion protein of human ASCL4. The exact sequence is proprietary. |
| Purification | The antibody was purified by immunogen affinity chromatography. |
| Molecular Weight | Predicted: 19 kD; Observed: 19 kD |
| Form/Buffer | Liquid in 0.42% Potassium phosphate, 0.87% Sodium chloride, pH 7.3, 30% glycerol, and 0.01% sodium azide. |
| Alternative Names | BHLHA44; HASH4; Achaete-scute homolog 4; ASH-4; hASH4; Achaete-scute-like protein 4; Class A basic helix-loop-helix protein 44; bHLHa44 |
| Gene Symbol | ASCL4 |
| Entrez Gene | 121549(Human) |
| SwissProt | Q6XD76(Human) |

*AREX continuously optimizes our products. Webpage content may not reflect the latest updates. For inquiries, please contact info@arexbio.com or your local distributor.

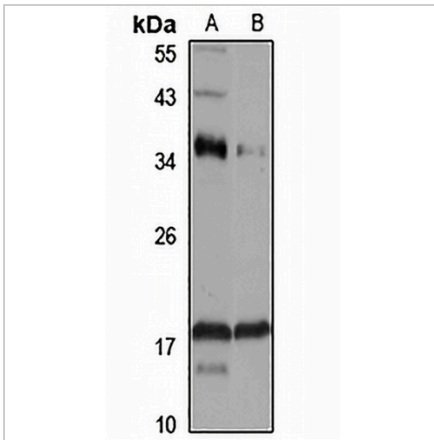
*Clone Number, Reactivity, Source/Host and Clonality can be found in the product name and Key Features section above.

DATASHEET

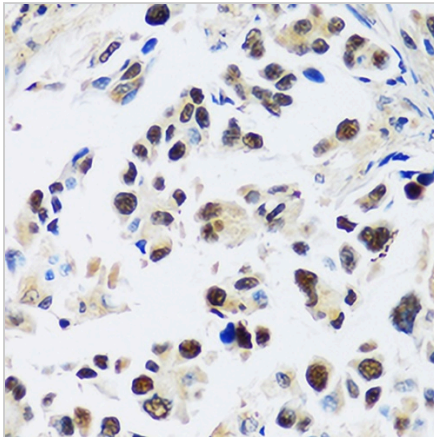
ASCL4 Rabbit Polyclonal Antibody

CAT. NO. APA15108

DATA



Western blot analysis of ASCL4 expression in HEK293T (A), MCF7 (B) whole cell lysates. (Predicted band size: 19 kD; Observed band size: 19 kD)



Immunohistochemical analysis of ASCL4 staining in human lung cancer formalin fixed paraffin embedded tissue section. The section was pre-treated using heat mediated antigen retrieval with sodium citrate buffer (pH 6.0). The section was then incubated with the antibody at room temperature and detected using an HRP conjugated compact polymer system. DAB was used as the chromogen. The section was then counterstained with haematoxylin and mounted with DPX.

STORAGE

Store at 4°C short term. For long term storage, store at -20°C, avoiding freeze/thaw cycles.

NOTE

For Research Use Only. Not for diagnostic, therapeutics, prophylactic or in vivo use.