

DATASHEET

ASGPR2 Rabbit Polyclonal Antibody

CAT. NO. APA15109

KEY FEATURES

Target	ASGPR2	Source / Host	Rabbit
Reactivity	Human	Clonality	Polyclonal
Applications	WB	Conjugation	Unconjugated
Form / Buffer	Liquid in 0.42% Potassium phosphate, 0.87% Sodium chloride, pH 7.3, 30% glycerol, and 0.01% sodium azide.		Storage at -20°C

BACKGROUND

Mediates the endocytosis of plasma glycoproteins to which the terminal sialic acid residue on their complex carbohydrate moieties has been removed. The receptor recognizes terminal galactose and N-acetylgalactosamine units. After ligand binding to the receptor, the resulting complex is internalized and transported to a sorting organelle, where receptor and ligand are disassociated. The receptor then returns to the cell membrane surface.

APPLICATION

To ensure optimal assay performance, AREX recommends conducting reagent titration tailored to each testing system for optimal detection results.

WB	1:500 - 1:2000
----	----------------

*Results are sample-specific. Please refer to your local assay conditions and test parameters for reference.

PRODUCT OVERVIEW

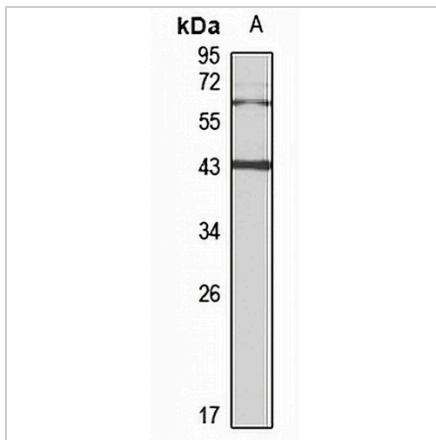
Description	Rabbit polyclonal antibody to ASGPR2
Specificity	Recognizes endogenous levels of ASGPR2 protein
Antibody Type	Primary antibody
Immunogen	Recombinant fusion protein of human ASGPR2. The exact sequence is proprietary.
Purification	The antibody was purified by immunogen affinity chromatography.
Molecular Weight	Predicted: 32; Observed: 41 kD
Form/Buffer	Liquid in 0.42% Potassium phosphate, 0.87% Sodium chloride, pH 7.3, 30% glycerol, and 0.01% sodium azide.
Alternative Names	CLEC4H2; Asialoglycoprotein receptor 2; ASGP-R 2; ASGPR 2; C-type lectin domain family 4 member H2; Hepatic lectin H2; HL-2
Gene Symbol	ASGR2
Entrez Gene	433(Human)
SwissProt	P07307(Human)

*AREX continuously optimizes our products. Webpage content may not reflect the latest updates. For inquiries, please contact info@arexbio.com or your local distributor.

*Clone Number, Reactivity, Source/Host and Clonality can be found in the product name and Key Features section above.

DATASHEET**ASGPR2 Rabbit Polyclonal Antibody**

CAT. NO. APA15109

DATA

Western blot analysis of ASGPR2 expression in HepG2 (A) whole cell lysates. (Predicted band size: 32; 35 kD; Observed band size: 41 kD)

STORAGE

Store at 4°C short term. For long term storage, store at -20°C, avoiding freeze/thaw cycles.

NOTE

For Research Use Only. Not for diagnostic, therapeutics, prophylactic or in vivo use.