

DATASHEET

ASH2L Rabbit Polyclonal Antibody

CAT. NO. APA15110

KEY FEATURES

Target	ASH2L	Source / Host	Rabbit
Reactivity	Human, Mouse, Rat	Clonality	Polyclonal
Applications	WB, IF/ICC	Conjugation	Unconjugated
Form / Buffer	Liquid in 0.42% Potassium phosphate, 0.87% Sodium chloride, pH 7.3, 30% glycerol, and 0.01% sodium azide.		Storage at -20°C

BACKGROUND

Transcriptional regulator . Component or associated component of some histone methyltransferase complexes which regulates transcription through recruitment of those complexes to gene promoters . Component of the Set1/Ash2 histone methyltransferase (HMT) complex, a complex that specifically methylates 'Lys-4' of histone H3, but not if the neighboring 'Lys-9' residue is already methylated . As part of the MLL1/MLL complex it is involved in methylation and dimethylation at 'Lys-4' of histone H3 . May play a role in hematopoiesis . In association with RBBP5 and WDR5, stimulates the histone methyltransferase activities of KMT2A, KMT2B, KMT2C, KMT2D, SETD1A and SETD1B .

APPLICATION

To ensure optimal assay performance, AREX recommends conducting reagent titration tailored to each testing system for optimal detection results.

WB	1:500 - 1:2000
IF/ICC	1:50 - 1:200

*Results are sample-specific. Please refer to your local assay conditions and test parameters for reference.

PRODUCT OVERVIEW

Description	Rabbit polyclonal antibody to ASH2L
Specificity	Recognizes endogenous levels of ASH2L protein
Antibody Type	Primary antibody
Immunogen	Recombinant fusion protein of human ASH2L. The exact sequence is proprietary.
Purification	The antibody was purified by immunogen affinity chromatography.
Molecular Weight	Predicted: 56; Observed: 68 kD
Form/Buffer	Liquid in 0.42% Potassium phosphate, 0.87% Sodium chloride, pH 7.3, 30% glycerol, and 0.01% sodium azide.
Alternative Names	ASH2L1; Set1/Ash2 histone methyltransferase complex subunit ASH2; ASH2-like protein
Gene Symbol	ASH2L
Entrez Gene	9070(Human); 23808(Mouse)
SwissProt	Q9UBL3(Human); Q91X20(Mouse)

*AREX continuously optimizes our products. Webpage content may not reflect the latest updates. For inquiries, please contact info@arexbio.com or your local distributor.

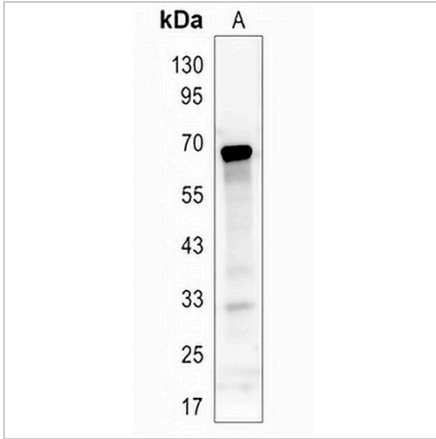
*Clone Number, Reactivity, Source/Host and Clonality can be found in the product name and Key Features section above.

DATASHEET

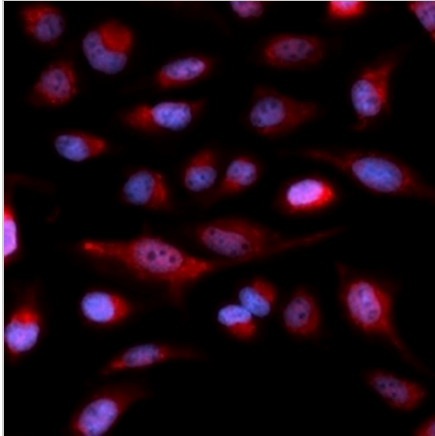
ASH2L Rabbit Polyclonal Antibody

CAT. NO. APA15110

DATA



Western blot analysis of ASH2L expression in K562 (A) whole cell lysates. (Predicted band size: 56; 60; 68 kD; Observed band size: 68 kD)



Immunofluorescent analysis of ASH2L staining in U2OS cells. Formalin-fixed cells were permeabilized with 0.1% Triton X-100 in TBS for 5-10 minutes and blocked with 3% BSA-PBS for 30 minutes at room temperature. Cells were probed with the primary antibody in 3% BSA-PBS and incubated overnight at 4 °C in a humidified chamber. Cells were washed with PBST and incubated with a Alexa Fluor 594-conjugated secondary antibody (red) in PBS at room temperature in the dark.

STORAGE

Store at 4°C short term. For long term storage, store at -20°C, avoiding freeze/thaw cycles.

NOTE

For Research Use Only. Not for diagnostic, therapeutics, prophylactic or in vivo use.