

## DATASHEET

# ASMT Rabbit Polyclonal Antibody

CAT. NO. APA15112

### KEY FEATURES

Target	ASMT	Source / Host	Rabbit
Reactivity	Human	Clonality	Polyclonal
Applications	WB, FC	Conjugation	Unconjugated
Form / Buffer	Liquid in 0.42% Potassium phosphate, 0.87% Sodium chloride, pH 7.3, 30% glycerol, and 0.01% sodium azide.		Storage at -20°C

### BACKGROUND

Catalyzes the transfer of a methyl group onto N-acetylserotonin, producing melatonin (N-acetyl-5-methoxytryptamine).

### APPLICATION

To ensure optimal assay performance, AREX recommends conducting reagent titration tailored to each testing system for optimal detection results.

WB	1:500 - 1:2000
FC	1:20 - 1:50

\*Results are sample-specific. Please refer to your local assay conditions and test parameters for reference.

### PRODUCT OVERVIEW

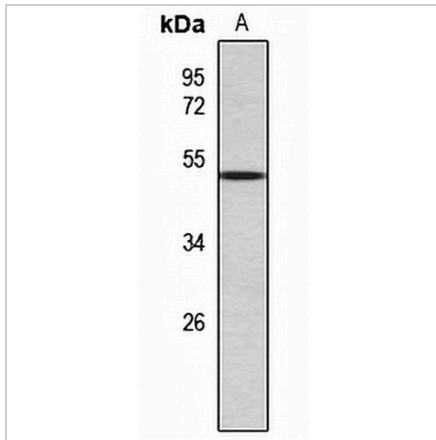
Description	Rabbit polyclonal antibody to ASMT
Specificity	Recognizes endogenous levels of ASMT protein
Antibody Type	Primary antibody
Immunogen	KLH-conjugated synthetic peptide of human ASMT. The exact sequence is proprietary.
Purification	The antibody was purified by immunogen affinity chromatography.
Molecular Weight	Predicted: 33; Observed: 52 kD
Form/Buffer	Liquid in 0.42% Potassium phosphate, 0.87% Sodium chloride, pH 7.3, 30% glycerol, and 0.01% sodium azide.
Alternative Names	Acetylserotonin O-methyltransferase; Hydroxyindole O-methyltransferase; HIOMT
Gene Symbol	ASMT
Entrez Gene	438(Human)
SwissProt	P46597(Human)

\*AREX continuously optimizes our products. Webpage content may not reflect the latest updates. For inquiries, please contact [info@arexbio.com](mailto:info@arexbio.com) or your local distributor.

\*Clone Number, Reactivity, Source/Host and Clonality can be found in the product name and Key Features section above.

**DATASHEET****ASMT Rabbit Polyclonal Antibody**

CAT. NO. APA15112

**DATA**

Western blot analysis of ASMT expression in HEK293T (A) whole cell lysates. (Predicted band size: 33; 38; 41 kD; Observed band size: 52 kD)

**STORAGE**

Store at 4°C short term. For long term storage, store at -20°C, avoiding freeze/thaw cycles.

**NOTE**

For Research Use Only. Not for diagnostic, therapeutics, prophylactic or in vivo use.