

DATASHEET

ASXL1 Rabbit Polyclonal Antibody

CAT. NO. APA15117

KEY FEATURES

Target	ASXL1	Source / Host	Rabbit
Reactivity	Human, Mouse	Clonality	Polyclonal
Applications	WB	Conjugation	Unconjugated
Form / Buffer	Liquid in 0.42% Potassium phosphate, 0.87% Sodium chloride, pH 7.3, 30% glycerol, and 0.01% sodium azide.		Storage at -20°C

BACKGROUND

Probable Polycomb group (PcG) protein involved in transcriptional regulation mediated by ligand-bound nuclear hormone receptors, such as retinoic acid receptors (RARs) and peroxisome proliferator-activated receptor gamma (PPARG) protein involved in transcriptional regulation mediated by ligand-bound nuclear hormone receptors, such as retinoic acid receptors (RARs) and peroxisome proliferator-activated receptor gamma (PPARG) . Acts as a coactivator of RARA and RXRA through association with NCOA1 . Acts as a corepressor for PPARG and suppresses its adipocyte differentiation-inducing activity . Non-catalytic component of the PR-DUB complex, a complex that specifically mediates deubiquitination of histone H2A monoubiquitinated at 'Lys-119' (H2AK119ub1) .

APPLICATION

To ensure optimal assay performance, AREX recommends conducting reagent titration tailored to each testing system for optimal detection results.

WB	1:500 - 1:2000
----	----------------

*Results are sample-specific. Please refer to your local assay conditions and test parameters for reference.

PRODUCT OVERVIEW

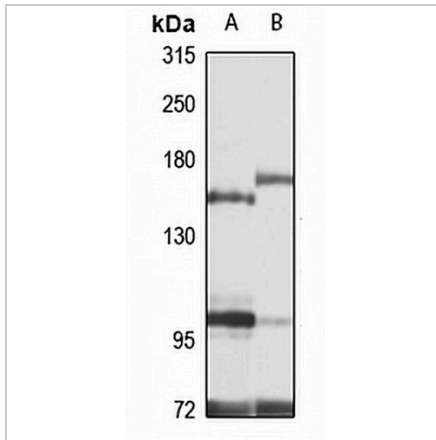
Description	Rabbit polyclonal antibody to ASXL1
Specificity	Recognizes endogenous levels of ASXL1 protein
Antibody Type	Primary antibody
Immunogen	Recombinant fusion protein of human ASXL1. The exact sequence is proprietary.
Purification	The antibody was purified by immunogen affinity chromatography.
Molecular Weight	Predicted: 53; Observed: 165 kD
Form/Buffer	Liquid in 0.42% Potassium phosphate, 0.87% Sodium chloride, pH 7.3, 30% glycerol, and 0.01% sodium azide.
Alternative Names	KIAA0978; Putative Polycomb group protein ASXL1; Additional sex combs-like protein 1
Gene Symbol	ASXL1
Entrez Gene	171023(Human); 228790(Mouse)
SwissProt	Q8IXJ9(Human); P59598(Mouse)

*AREX continuously optimizes our products. Webpage content may not reflect the latest updates. For inquiries, please contact info@arexbio.com or your local distributor.

*Clone Number, Reactivity, Source/Host and Clonality can be found in the product name and Key Features section above.

DATASHEET**ASXL1 Rabbit Polyclonal Antibody**

CAT. NO. APA15117

DATA

Western blot analysis of ASXL1 expression in HL60 (A), mouse liver (B) whole cell lysates.
(Predicted band size: 53; 165 kD; Observed band size: 165 kD)

STORAGE

Store at 4°C short term. For long term storage, store at -20°C, avoiding freeze/thaw cycles.

NOTE

For Research Use Only. Not for diagnostic, therapeutics, prophylactic or in vivo use.