

DATASHEET

Atlastin-2 Rabbit Polyclonal Antibody

CAT. NO. APA15121

KEY FEATURES

Target	Atlastin-2	Source / Host	Rabbit
Reactivity	Human	Clonality	Polyclonal
Applications	WB	Conjugation	Unconjugated
Form / Buffer	Liquid in 0.42% Potassium phosphate, 0.87% Sodium chloride, pH 7.3, 30% glycerol, and 0.01% sodium azide.		Storage at -20°C

BACKGROUND

Atlastin-2 (ATL2) is a membrane-anchored GTPase that mediates the GTP-dependent fusion of endoplasmic reticulum (ER) membranes, maintaining the continuous ER network. It facilitates the formation of three-way junctions where ER tubules intersect. Two atlastin-2 on neighboring ER tubules bind GTP and form loose homodimers through the GB1/RHD3-type G domains and 3HB regions. Upon GTP hydrolysis, the 3HB regions tighten, pulling the membranes together to drive their fusion. After fusion, the homodimer disassembles upon release of inorganic phosphate (Pi).

APPLICATION

To ensure optimal assay performance, AREX recommends conducting reagent titration tailored to each testing system for optimal detection results.

WB	1:500 - 1:2000
----	----------------

*Results are sample-specific. Please refer to your local assay conditions and test parameters for reference.

PRODUCT OVERVIEW

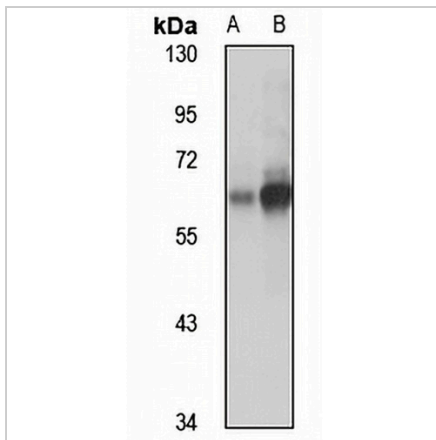
Description	Rabbit polyclonal antibody to Atlastin-2
Specificity	Recognizes endogenous levels of Atlastin-2 protein
Antibody Type	Primary antibody
Immunogen	Recombinant fusion protein of human Atlastin-2. The exact sequence is proprietary.
Purification	The antibody was purified by immunogen affinity chromatography.
Molecular Weight	Predicted: 46; Observed: 66 kD
Form/Buffer	Liquid in 0.42% Potassium phosphate, 0.87% Sodium chloride, pH 7.3, 30% glycerol, and 0.01% sodium azide.
Alternative Names	ARL6IP2; Atlastin-2; ADP-ribosylation factor-like protein 6-interacting protein 2; ARL-6-interacting protein 2; Aip-2
Gene Symbol	ATL2
Entrez Gene	64225(Human); 56298(Mouse)
SwissProt	Q8NHH9(Human); Q6PA06(Mouse)

*AREX continuously optimizes our products. Webpage content may not reflect the latest updates. For inquiries, please contact info@arexbio.com or your local distributor.

*Clone Number, Reactivity, Source/Host and Clonality can be found in the product name and Key Features section above.

DATASHEET**Atlastin-2 Rabbit Polyclonal Antibody**

CAT. NO. APA15121

DATA

Western blot analysis of Atlastin-2 expression in Jurkat (A), HeLa (B) whole cell lysates.
(Predicted band size: 46; 64; 65; 66 kD; Observed band size: 66 kD)

STORAGE

Store at 4°C short term. For long term storage, store at -20°C, avoiding freeze/thaw cycles.

NOTE

For Research Use Only. Not for diagnostic, therapeutics, prophylactic or in vivo use.