

DATASHEET

HAH1 Rabbit Polyclonal Antibody

CAT. NO. APA15122

KEY FEATURES

Target	HAH1	Source / Host	Rabbit
Reactivity	Human, Mouse, Rat	Clonality	Polyclonal
Applications	WB	Conjugation	Unconjugated
Form / Buffer	Liquid in 0.42% Potassium phosphate, 0.87% Sodium chloride, pH 7.3, 30% glycerol, and 0.01% sodium azide.		Storage at -20°C

BACKGROUND

Binds and deliver cytosolic copper to the copper ATPase proteins. May be important in cellular antioxidant defense.

APPLICATION

To ensure optimal assay performance, AREX recommends conducting reagent titration tailored to each testing system for optimal detection results.

WB	1:500 - 1:1000
----	----------------

*Results are sample-specific. Please refer to your local assay conditions and test parameters for reference.

PRODUCT OVERVIEW

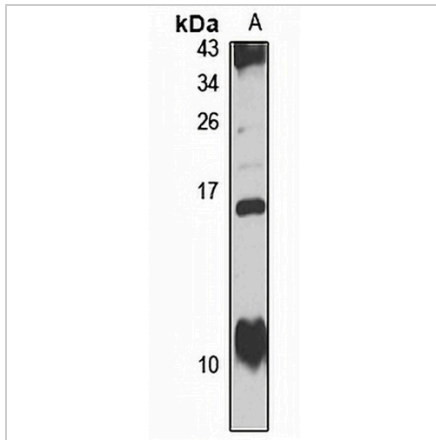
Description	Rabbit polyclonal antibody to HAH1
Specificity	Recognizes endogenous levels of HAH1 protein
Antibody Type	Primary antibody
Immunogen	Recombinant fusion protein of human HAH1. The exact sequence is proprietary.
Purification	The antibody was purified by immunogen affinity chromatography.
Molecular Weight	Predicted: 7 kD; Observed: 12 kD
Form/Buffer	Liquid in 0.42% Potassium phosphate, 0.87% Sodium chloride, pH 7.3, 30% glycerol, and 0.01% sodium azide.
Alternative Names	HAH1; Copper transport protein ATOX1; Metal transport protein ATX1
Gene Symbol	ATOX1
Entrez Gene	475(Human); 11927(Mouse); 84355(Rat)
SwissProt	O00244(Human); O08997(Mouse); Q9WUC4(Rat)

*AREX continuously optimizes our products. Webpage content may not reflect the latest updates. For inquiries, please contact info@arexbio.com or your local distributor.

*Clone Number, Reactivity, Source/Host and Clonality can be found in the product name and Key Features section above.

DATASHEET**HAH1 Rabbit Polyclonal Antibody**

CAT. NO. APA15122

DATA

Western blot analysis of HAH1 expression in K562 (A) whole cell lysates. (Predicted band size: 7 kD; Observed band size: 12 kD)

STORAGE

Store at 4°C short term. For long term storage, store at -20°C, avoiding freeze/thaw cycles.

NOTE

For Research Use Only. Not for diagnostic, therapeutics, prophylactic or in vivo use.