

DATASHEET

ATP10A Rabbit Polyclonal Antibody

CAT. NO. APA15123

KEY FEATURES

Target	ATP10A	Source / Host	Rabbit
Reactivity	Human, Mouse	Clonality	Polyclonal
Applications	WB	Conjugation	Unconjugated
Form / Buffer	Liquid in 0.42% Potassium phosphate, 0.87% Sodium chloride, pH 7.3, 30% glycerol, and 0.01% sodium azide.		Storage at -20°C

BACKGROUND

Catalytic component of P4-ATPase flippase complex, which catalyzes the hydrolysis of ATP coupled to the transport of phosphatidylcholine (PC) from the outer to the inner leaflet of the plasma membrane from the outer to the inner leaflet of the plasma membrane . Initiates inward plasma membrane bending and recruitment of Bin/amphiphysin/Rvs (BAR) domain-containing proteins involved in membrane tubulation and cell trafficking . Facilitates ITGB1/beta1 integrin endocytosis, delaying cell adhesion and cell spreading on extracellular matrix . Has low flippase activity toward glucosylceramide (GlcCer) .

APPLICATION

To ensure optimal assay performance, AREX recommends conducting reagent titration tailored to each testing system for optimal detection results.

WB	1:500 - 1:2000
----	----------------

*Results are sample-specific. Please refer to your local assay conditions and test parameters for reference.

PRODUCT OVERVIEW

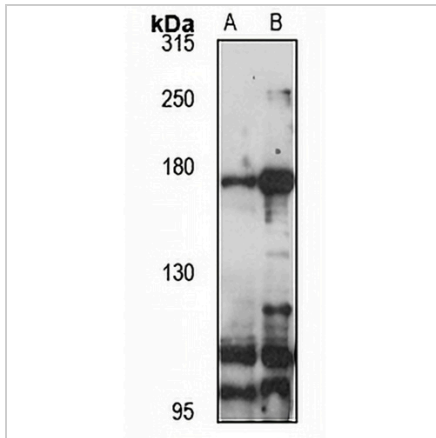
Description	Rabbit polyclonal antibody to ATP10A
Specificity	Recognizes endogenous levels of ATP10A protein
Antibody Type	Primary antibody
Immunogen	Recombinant fusion protein of human ATP10A. The exact sequence is proprietary.
Purification	The antibody was purified by immunogen affinity chromatography.
Molecular Weight	Predicted: 17; Observed: 170 kD
Form/Buffer	Liquid in 0.42% Potassium phosphate, 0.87% Sodium chloride, pH 7.3, 30% glycerol, and 0.01% sodium azide.
Alternative Names	ATP10C; ATPVA; ATPVC; KIAA0566; Probable phospholipid-transporting ATPase VA; ATPase class V type 10A; Aminophospholipid translocase VA
Gene Symbol	ATP10A
Entrez Gene	57194(Human); 11982(Mouse)
SwissProt	O60312(Human); O54827(Mouse)

*AREX continuously optimizes our products. Webpage content may not reflect the latest updates. For inquiries, please contact info@arexbio.com or your local distributor.

*Clone Number, Reactivity, Source/Host and Clonality can be found in the product name and Key Features section above.

DATASHEET**ATP10A Rabbit Polyclonal Antibody**

CAT. NO. APA15123

DATA

Western blot analysis of ATP10A expression in HT29 (A), A431 (B) whole cell lysates.
(Predicted band size: 17; 167 kD; Observed band size: 170 kD)

STORAGE

Store at 4°C short term. For long term storage, store at -20°C, avoiding freeze/thaw cycles.

NOTE

For Research Use Only. Not for diagnostic, therapeutics, prophylactic or in vivo use.