

DATASHEET

ATP11B Rabbit Polyclonal Antibody

CAT. NO. APA15124

KEY FEATURES

Target	ATP11B	Source / Host	Rabbit
Reactivity	Human, Mouse	Clonality	Polyclonal
Applications	WB	Conjugation	Unconjugated
Form / Buffer	Liquid in 0.42% Potassium phosphate, 0.87% Sodium chloride, pH 7.3, 30% glycerol, and 0.01% sodium azide.		Storage at -20°C

BACKGROUND

Catalytic component of a P4-ATPase flippase complex which catalyzes the hydrolysis of ATP coupled to the transport of aminophospholipids, phosphatidylserines (PS) and phosphatidylethanolamines (PE), from the outer to the inner leaflet of intracellular membranes and phosphatidylethanolamines (PE), from the outer to the inner leaflet of intracellular membranes . May contribute to the maintenance of membrane lipid asymmetry in endosome compartment .

APPLICATION

To ensure optimal assay performance, AREX recommends conducting reagent titration tailored to each testing system for optimal detection results.

WB	1:500 - 1:2000
----	----------------

*Results are sample-specific. Please refer to your local assay conditions and test parameters for reference.

PRODUCT OVERVIEW

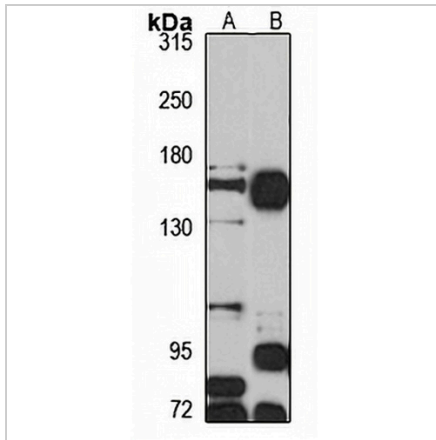
Description	Rabbit polyclonal antibody to ATP11B
Specificity	Recognizes endogenous levels of ATP11B protein
Antibody Type	Primary antibody
Immunogen	Recombinant fusion protein of human ATP11B. The exact sequence is proprietary.
Purification	The antibody was purified by immunogen affinity chromatography.
Molecular Weight	Predicted: 134 kD; Observed: 160 kD
Form/Buffer	Liquid in 0.42% Potassium phosphate, 0.87% Sodium chloride, pH 7.3, 30% glycerol, and 0.01% sodium azide.
Alternative Names	ATPIF; ATPIR; KIAA0956; Probable phospholipid-transporting ATPase IF; ATPase IR; ATPase class VI type 11B
Gene Symbol	ATP11B
Entrez Gene	23200(Human)
SwissProt	Q9Y2G3(Human)

*AREX continuously optimizes our products. Webpage content may not reflect the latest updates. For inquiries, please contact info@arexbio.com or your local distributor.

*Clone Number, Reactivity, Source/Host and Clonality can be found in the product name and Key Features section above.

DATASHEET**ATP11B Rabbit Polyclonal Antibody**

CAT. NO. APA15124

DATA

Western blot analysis of ATP11B expression in HeLa (A), mouse liver (B) whole cell lysates.
(Predicted band size: 134 kD; Observed band size: 160 kD)

STORAGE

Store at 4°C short term. For long term storage, store at -20°C, avoiding freeze/thaw cycles.

NOTE

For Research Use Only. Not for diagnostic, therapeutics, prophylactic or in vivo use.