

DATASHEET

ATP11C Rabbit Polyclonal Antibody

CAT. NO. APA15125

KEY FEATURES

Target	ATP11C	Source / Host	Rabbit
Reactivity	Human, Mouse	Clonality	Polyclonal
Applications	WB	Conjugation	Unconjugated
Form / Buffer	Liquid in 0.42% Potassium phosphate, 0.87% Sodium chloride, pH 7.3, 30% glycerol, and 0.01% sodium azide.		Storage at-20°C

BACKGROUND

Catalytic component of a P4-ATPase flippase complex which catalyzes the hydrolysis of ATP coupled to the transport of aminophospholipids, phosphatidylserines (PS) and phosphatidylethanolamines (PE), from the outer to the inner leaflet of the plasma membrane and phosphatidylethanolamines (PE), from the outer to the inner leaflet of the plasma membrane . Major PS-flippase in immune cell subsets. In erythrocyte plasma membrane, it is required to maintain PS in the inner leaflet preventing its exposure on the surface. This asymmetric distribution is critical for the survival of erythrocytes in circulation since externalized PS is a phagocytic signal for erythrocyte clearance by splenic macrophages . Required for B cell differentiation past the pro-B cell stage .

APPLICATION

To ensure optimal assay performance, AREX recommends conducting reagent titration tailored to each testing system for optimal detection results.

WB	1:500 - 1:2000
----	----------------

*Results are sample-specific. Please refer to your local assay conditions and test parameters for reference.

PRODUCT OVERVIEW

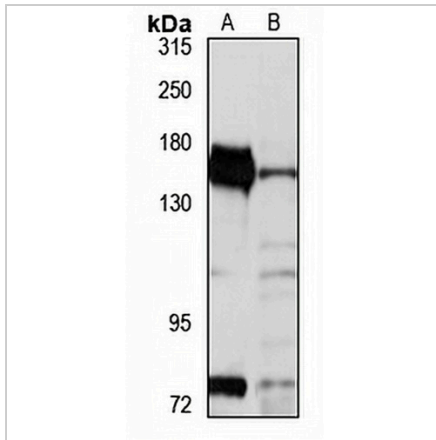
Description	Rabbit polyclonal antibody to ATP11C
Specificity	Recognizes endogenous levels of ATP11C protein
Antibody Type	Primary antibody
Immunogen	Recombinant fusion protein of human ATP11C. The exact sequence is proprietary.
Purification	The antibody was purified by immunogen affinity chromatography.
Molecular Weight	Predicted: 126; Observed: 157 kD
Form/Buffer	Liquid in 0.42% Potassium phosphate, 0.87% Sodium chloride, pH 7.3, 30% glycerol, and 0.01% sodium azide.
Alternative Names	ATPIG; ATPIQ; Probable phospholipid-transporting ATPase IG; ATPase IQ; ATPase class VI type 11C
Gene Symbol	ATP11C
Entrez Gene	286410(Human); 320940(Mouse)
SwissProt	Q8NB49(Human); Q9QZW0(Mouse)

*AREX continuously optimizes our products. Webpage content may not reflect the latest updates. For inquiries, please contact info@arexbio.com or your local distributor.

*Clone Number, Reactivity, Source/Host and Clonality can be found in the product name and Key Features section above.

DATASHEET**ATP11C Rabbit Polyclonal Antibody**

CAT. NO. APA15125

DATA

Western blot analysis of ATP11C expression in HepG2 (A), mouse lung (B) whole cell lysates. (Predicted band size: 126; 128; 129 kD; Observed band size: 157 kD)

STORAGE

Store at 4°C short term. For long term storage, store at -20°C, avoiding freeze/thaw cycles.

NOTE

For Research Use Only. Not for diagnostic, therapeutics, prophylactic or in vivo use.