

DATASHEET

ATP13A1 Rabbit Polyclonal Antibody

CAT. NO. APA15126

KEY FEATURES

Target	ATP13A1	Source / Host	Rabbit
Reactivity	Human, Mouse	Clonality	Polyclonal
Applications	WB, IHC	Conjugation	Unconjugated
Form / Buffer	Liquid in 0.42% Potassium phosphate, 0.87% Sodium chloride, pH 7.3, 30% glycerol, and 0.01% sodium azide.		Storage at -20°C

BACKGROUND

Endoplasmic reticulum translocase required to remove mitochondrial transmembrane proteins mistargeted to the endoplasmic reticulum. Acts as a dislocase that mediates the ATP-dependent extraction of mislocalized mitochondrial transmembrane proteins from the endoplasmic reticulum membrane. Specifically binds mitochondrial tail-anchored transmembrane proteins: has an atypically large substrate-binding pocket that recognizes and binds moderately hydrophobic transmembranes with short hydrophilic luminal domains.

APPLICATION

To ensure optimal assay performance, AREX recommends conducting reagent titration tailored to each testing system for optimal detection results.

WB	1:500 - 1:2000
IHC	1:50 - 1:200

*Results are sample-specific. Please refer to your local assay conditions and test parameters for reference.

PRODUCT OVERVIEW

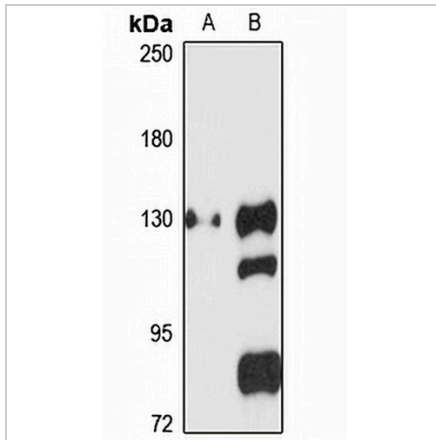
Description	Rabbit polyclonal antibody to ATP13A1
Specificity	Recognizes endogenous levels of ATP13A1 protein
Antibody Type	Primary antibody
Immunogen	Recombinant fusion protein of human ATP13A1. The exact sequence is proprietary.
Purification	The antibody was purified by immunogen affinity chromatography.
Molecular Weight	Predicted: 38; Observed: 133 kD
Form/Buffer	Liquid in 0.42% Potassium phosphate, 0.87% Sodium chloride, pH 7.3, 30% glycerol, and 0.01% sodium azide.
Alternative Names	ATP13A; KIAA1825; Probable cation-transporting ATPase 13A1
Gene Symbol	ATP13A1
Entrez Gene	57130(Human); 170759(Mouse)
SwissProt	Q9HD20(Human); Q9EPE9(Mouse)

*AREX continuously optimizes our products. Webpage content may not reflect the latest updates. For inquiries, please contact info@arexbio.com or your local distributor.

*Clone Number, Reactivity, Source/Host and Clonality can be found in the product name and Key Features section above.

DATASHEET**ATP13A1 Rabbit Polyclonal Antibody**

CAT. NO. APA15126

DATA

Western blot analysis of ATP13A1 expression in mouse heart (A), mouse kidney (B) whole cell lysates. (Predicted band size: 38; 121; 132 kD; Observed band size: 133 kD)

STORAGE

Store at 4°C short term. For long term storage, store at -20°C, avoiding freeze/thaw cycles.

NOTE

For Research Use Only. Not for diagnostic, therapeutics, prophylactic or in vivo use.