

**DATASHEET**

**ATP13A2 Rabbit Polyclonal Antibody**

CAT. NO. APA15127

**KEY FEATURES**

Target	ATP13A2	Source / Host	Rabbit
Reactivity	Human, Mouse, Rat	Clonality	Polyclonal
Applications	WB	Conjugation	Unconjugated
Form / Buffer	Liquid in 0.42% Potassium phosphate, 0.87% Sodium chloride, pH 7.3, 30% glycerol, and 0.01% sodium azide.		Storage at-20°C

**BACKGROUND**

ATPase which acts as a lysosomal polyamine exporter with high affinity for spermine . Also stimulates cellular uptake of polyamines and protects against polyamine toxicity . Plays a role in intracellular cation homeostasis and the maintenance of neuronal integrity . Contributes to cellular zinc homeostasis . Confers cellular protection against Mn(2+) and Zn(2+) toxicity and mitochondrial stress . Required for proper lysosomal and mitochondrial maintenance . Regulates the autophagy-lysosome pathway through the control of SYT11 expression at both transcriptional and post-translational levels . Facilitates recruitment of deacetylase HDAC6 to lysosomes to deacetylate CTTN, leading to actin polymerization, promotion of autophagosome-lysosome fusion and completion of autophagy .

**APPLICATION**

To ensure optimal assay performance, AREX recommends conducting reagent titration tailored to each testing system for optimal detection results.

WB	1:500 - 1:2000
----	----------------

\*Results are sample-specific. Please refer to your local assay conditions and test parameters for reference.

**PRODUCT OVERVIEW**

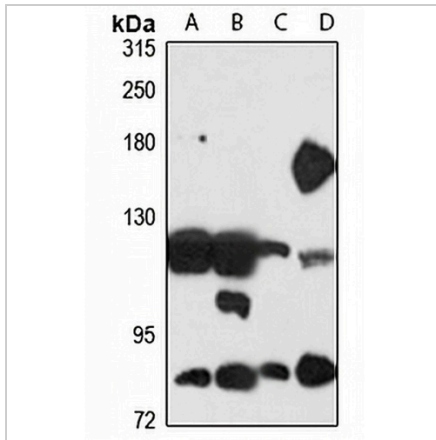
Description	Rabbit polyclonal antibody to ATP13A2
Specificity	Recognizes endogenous levels of ATP13A2 protein
Antibody Type	Primary antibody
Immunogen	Recombinant fusion protein of human ATP13A2. The exact sequence is proprietary.
Purification	The antibody was purified by immunogen affinity chromatography.
Molecular Weight	Predicted: 125; Observed: 129 kD
Form/Buffer	Liquid in 0.42% Potassium phosphate, 0.87% Sodium chloride, pH 7.3, 30% glycerol, and 0.01% sodium azide.
Alternative Names	PARK9; Probable cation-transporting ATPase 13A2
Gene Symbol	ATP13A2
Entrez Gene	23400(Human); 74772(Mouse)
SwissProt	Q9NQ11(Human); Q9CTG6(Mouse)

\*AREX continuously optimizes our products. Webpage content may not reflect the latest updates. For inquiries, please contact [info@arexbio.com](mailto:info@arexbio.com) or your local distributor.

\*Clone Number, Reactivity, Source/Host and Clonality can be found in the product name and Key Features section above.

**DATASHEET****ATP13A2 Rabbit Polyclonal Antibody**

CAT. NO. APA15127

**DATA**

Western blot analysis of ATP13A2 expression in A375 (A), K562 (B), mouse liver (C), rat brain (D) whole cell lysates. (Predicted band size: 125; 128 kD; Observed band size: 129 kD)

**STORAGE**

Store at 4°C short term. For long term storage, store at -20°C, avoiding freeze/thaw cycles.

**NOTE**

For Research Use Only. Not for diagnostic, therapeutics, prophylactic or in vivo use.