

## DATASHEET

# ATP2A3 Rabbit Polyclonal Antibody

CAT. NO. APA15128

### KEY FEATURES

Target	ATP2A3	Source / Host	Rabbit
Reactivity	Human, Mouse, Rat	Clonality	Polyclonal
Applications	WB	Conjugation	Unconjugated
Form / Buffer	Liquid in 0.42% Potassium phosphate, 0.87% Sodium chloride, pH 7.3, 30% glycerol, and 0.01% sodium azide.		Storage at -20°C

### BACKGROUND

This magnesium-dependent enzyme catalyzes the hydrolysis of ATP coupled with the transport of calcium. Transports calcium ions from the cytosol into the sarcoplasmic/endoplasmic reticulum lumen. Contributes to calcium sequestration involved in muscular excitation/contraction.

### APPLICATION

To ensure optimal assay performance, AREX recommends conducting reagent titration tailored to each testing system for optimal detection results.

WB	1:500 - 1:1000
----	----------------

\*Results are sample-specific. Please refer to your local assay conditions and test parameters for reference.

### PRODUCT OVERVIEW

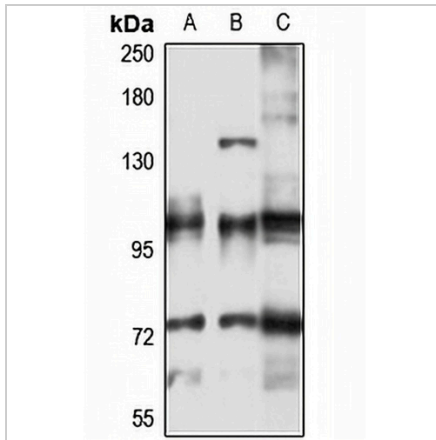
Description	Rabbit polyclonal antibody to ATP2A3
Specificity	Recognizes endogenous levels of ATP2A3 protein
Antibody Type	Primary antibody
Immunogen	Recombinant fusion protein of human ATP2A3. The exact sequence is proprietary.
Purification	The antibody was purified by immunogen affinity chromatography.
Molecular Weight	Predicted: 109; Observed: 114 kD
Form/Buffer	Liquid in 0.42% Potassium phosphate, 0.87% Sodium chloride, pH 7.3, 30% glycerol, and 0.01% sodium azide.
Alternative Names	Sarcoplasmic/endoplasmic reticulum calcium ATPase 3; SERCA3; SR Ca(2+)-ATPase 3; Calcium pump 3
Gene Symbol	ATP2A3
Entrez Gene	489(Human); 53313(Mouse); 25391(Rat)
SwissProt	Q93084(Human); Q64518(Mouse); P18596(Rat)

\*AREX continuously optimizes our products. Webpage content may not reflect the latest updates. For inquiries, please contact [info@arexbio.com](mailto:info@arexbio.com) or your local distributor.

\*Clone Number, Reactivity, Source/Host and Clonality can be found in the product name and Key Features section above.

**DATASHEET****ATP2A3 Rabbit Polyclonal Antibody**

CAT. NO. APA15128

**DATA**

Western blot analysis of ATP2A3 expression in HT29 (A), Jurkat (B), mouse lung (C) whole cell lysates. (Predicted band size: 109; 112; 113; 114 kD; Observed band size: 114 kD)

**STORAGE**

Store at 4°C short term. For long term storage, store at -20°C, avoiding freeze/thaw cycles.

**NOTE**

For Research Use Only. Not for diagnostic, therapeutics, prophylactic or in vivo use.