

DATASHEET

ATP6V1A Rabbit Polyclonal Antibody

CAT. NO. APA15131

KEY FEATURES

Target	ATP6V1A	Source / Host	Rabbit
Reactivity	Human, Mouse	Clonality	Polyclonal
Applications	WB	Conjugation	Unconjugated
Form / Buffer	Liquid in 0.42% Potassium phosphate, 0.87% Sodium chloride, pH 7.3, 30% glycerol, and 0.01% sodium azide.		Storage at -20°C

BACKGROUND

Catalytic subunit of the V1 complex of vacuolar(H⁺)-ATPase (V-ATPase), a multisubunit enzyme composed of a peripheral complex (V1) that hydrolyzes ATP and a membrane integral complex (V0) that translocates protons -ATPase (V-ATPase), a multisubunit enzyme composed of a peripheral complex (V1) that hydrolyzes ATP and a membrane integral complex (V0) that translocates protons . V-ATPase is responsible for acidifying and maintaining the pH of intracellular compartments and in some cell types, is targeted to the plasma membrane, where it is responsible for acidifying the extracellular environment .

APPLICATION

To ensure optimal assay performance, AREX recommends conducting reagent titration tailored to each testing system for optimal detection results.

WB	1:500 - 1:1000
----	----------------

*Results are sample-specific. Please refer to your local assay conditions and test parameters for reference.

PRODUCT OVERVIEW

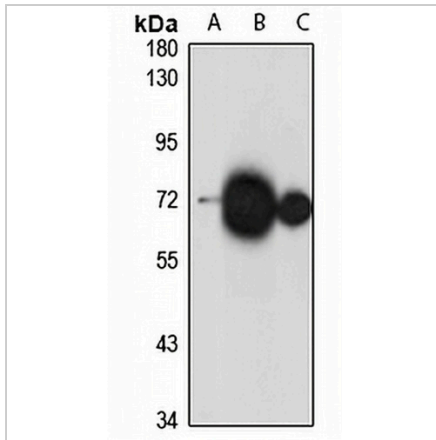
Description	Rabbit polyclonal antibody to ATP6V1A
Specificity	Recognizes endogenous levels of ATP6V1A protein
Antibody Type	Primary antibody
Immunogen	KLH-conjugated synthetic peptide of human ATP6V1A. The exact sequence is proprietary.
Purification	The antibody was purified by immunogen affinity chromatography.
Molecular Weight	Predicted: 64; Observed: 68 kD
Form/Buffer	Liquid in 0.42% Potassium phosphate, 0.87% Sodium chloride, pH 7.3, 30% glycerol, and 0.01% sodium azide.
Alternative Names	ATP6A1; ATP6V1A1; VPP2; V-type proton ATPase catalytic subunit A; V-ATPase subunit A; V-ATPase 69 kDa subunit; Vacuolar ATPase isoform VA68; Vacuolar proton pump subunit alpha
Gene Symbol	ATP6V1A
Entrez Gene	523(Human); 11964(Mouse)
SwissProt	P38606(Human); P50516(Mouse)

*AREX continuously optimizes our products. Webpage content may not reflect the latest updates. For inquiries, please contact info@arexbio.com or your local distributor.

*Clone Number, Reactivity, Source/Host and Clonality can be found in the product name and Key Features section above.

DATASHEET**ATP6V1A Rabbit Polyclonal Antibody**

CAT. NO. APA15131

DATA

Western blot analysis of ATP6V1A expression in HeLa (A), mouse brain (B), mouse kidney (C) whole cell lysates. (Predicted band size: 64; 68 kD; Observed band size: 68 kD)

STORAGE

Store at 4°C short term. For long term storage, store at -20°C, avoiding freeze/thaw cycles.

NOTE

For Research Use Only. Not for diagnostic, therapeutics, prophylactic or in vivo use.