

DATASHEET

ATP6V1D Rabbit Polyclonal Antibody

CAT. NO. APA15132

KEY FEATURES

Target	ATP6V1D	Source / Host	Rabbit
Reactivity	Human, Mouse, Rat	Clonality	Polyclonal
Applications	WB, IHC	Conjugation	Unconjugated
Form / Buffer	Liquid in 0.42% Potassium phosphate, 0.87% Sodium chloride, pH 7.3, 30% glycerol, and 0.01% sodium azide.		Storage at -20°C

BACKGROUND

Subunit of the V1 complex of vacuolar(H⁺)-ATPase (V-ATPase), a multisubunit enzyme composed of a peripheral complex (V1) that hydrolyzes ATP and a membrane integral complex (V0) that translocates protons -ATPase (V-ATPase), a multisubunit enzyme composed of a peripheral complex (V1) that hydrolyzes ATP and a membrane integral complex (V0) that translocates protons . V-ATPase is responsible for acidifying and maintaining the pH of intracellular compartments and in some cell types, is targeted to the plasma membrane, where it is responsible for acidifying the extracellular environment . May play a role in cilium biogenesis through regulation of the transport and the localization of proteins to the cilium .

APPLICATION

To ensure optimal assay performance, AREX recommends conducting reagent titration tailored to each testing system for optimal detection results.

WB	1:500 - 1:2000
IHC	1:50 - 1:200

*Results are sample-specific. Please refer to your local assay conditions and test parameters for reference.

PRODUCT OVERVIEW

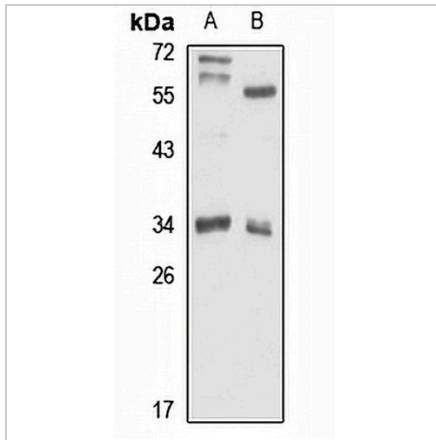
Description	Rabbit polyclonal antibody to ATP6V1D
Specificity	Recognizes endogenous levels of ATP6V1D protein
Antibody Type	Primary antibody
Immunogen	Recombinant fusion protein of human ATP6V1D. The exact sequence is proprietary.
Purification	The antibody was purified by immunogen affinity chromatography.
Molecular Weight	Predicted: 28 kD; Observed: 35 kD
Form/Buffer	Liquid in 0.42% Potassium phosphate, 0.87% Sodium chloride, pH 7.3, 30% glycerol, and 0.01% sodium azide.
Alternative Names	ATP6M; VATD; V-type proton ATPase subunit D; V-ATPase subunit D; V-ATPase 28 kDa accessory protein; Vacuolar proton pump subunit D
Gene Symbol	ATP6V1D
Entrez Gene	51382(Human); 73834(Mouse)
SwissProt	Q9Y5K8(Human); P57746(Mouse)

*AREX continuously optimizes our products. Webpage content may not reflect the latest updates. For inquiries, please contact info@arexbio.com or your local distributor.

*Clone Number, Reactivity, Source/Host and Clonality can be found in the product name and Key Features section above.

DATASHEET**ATP6V1D Rabbit Polyclonal Antibody**

CAT. NO. APA15132

DATA

Western blot analysis of ATP6V1D expression in HeLa (A), mouse lung (B) whole cell lysates. (Predicted band size: 28 kD; Observed band size: 35 kD)

STORAGE

Store at 4°C short term. For long term storage, store at -20°C, avoiding freeze/thaw cycles.

NOTE

For Research Use Only. Not for diagnostic, therapeutics, prophylactic or in vivo use.