

DATASHEET

BACE2 Rabbit Polyclonal Antibody

CAT. NO. APA15145

KEY FEATURES

Target	BACE2	Source / Host	Rabbit
Reactivity	Human, Mouse, Rat	Clonality	Polyclonal
Applications	WB	Conjugation	Unconjugated
Form / Buffer	Liquid in 0.42% Potassium phosphate, 0.87% Sodium chloride, pH 7.3, 30% glycerol, and 0.01% sodium azide.		Storage at -20°C

BACKGROUND

Responsible for the proteolytic processing of the amyloid precursor protein (APP). Cleaves APP, between residues 690 and 691, leading to the generation and extracellular release of beta-cleaved soluble APP, and a corresponding cell-associated C-terminal fragment which is later released by gamma-secretase. It has also been shown that it can cleave APP between residues 671 and 672. Cleaves APP, between residues 690 and 691, leading to the generation and extracellular release of beta-cleaved soluble APP, and a corresponding cell-associated C-terminal fragment which is later released by gamma-secretase. It has also been shown that it can cleave APP between residues 671 and 672. Involved in the proteolytic shedding of PMEL at early stages of melanosome biogenesis.

APPLICATION

To ensure optimal assay performance, AREX recommends conducting reagent titration tailored to each testing system for optimal detection results.

WB	1:500 - 1:2000
----	----------------

*Results are sample-specific. Please refer to your local assay conditions and test parameters for reference.

PRODUCT OVERVIEW

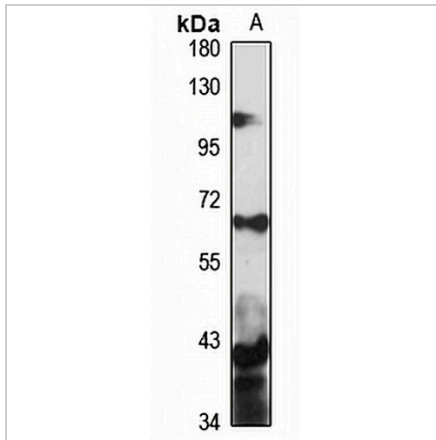
Description	Rabbit polyclonal antibody to BACE2
Specificity	Recognizes endogenous levels of BACE2 protein
Antibody Type	Primary antibody
Immunogen	Recombinant fusion protein of human BACE2. The exact sequence is proprietary.
Purification	The antibody was purified by immunogen affinity chromatography.
Molecular Weight	Predicted: 42; Observed: 56 kD
Form/Buffer	Liquid in 0.42% Potassium phosphate, 0.87% Sodium chloride, pH 7.3, 30% glycerol, and 0.01% sodium azide.
Alternative Names	AEPLC; ALP56; ASP21; Beta-secretase 2; Aspartic-like protease 56 kDa; Aspartyl protease 1; ASP1; Asp 1; Beta-site amyloid precursor protein cleaving enzyme 2; Beta-site APP cleaving enzyme 2; Down region aspartic protease; DRAP; Memapsin-1; Membrane-associated aspartic protease 1; Theta-secretase
Gene Symbol	BACE2
Entrez Gene	25825(Human)
SwissProt	Q9Y5Z0(Human)

*AREX continuously optimizes our products. Webpage content may not reflect the latest updates. For inquiries, please contact info@arexbio.com or your local distributor.

*Clone Number, Reactivity, Source/Host and Clonality can be found in the product name and Key Features section above.

DATASHEET**BACE2 Rabbit Polyclonal Antibody**

CAT. NO. APA15145

DATA

Western blot analysis of BACE2 expression in DU145 (A) whole cell lysates. (Predicted band size: 42; 46; 48; 50; 56 kD; Observed band size: 56 kD)

STORAGE

Store at 4°C short term. For long term storage, store at -20°C, avoiding freeze/thaw cycles.

NOTE

For Research Use Only. Not for diagnostic, therapeutics, prophylactic or in vivo use.