

DATASHEET

BAF Rabbit Polyclonal Antibody

CAT. NO. APA15146

KEY FEATURES

Target	BAF	Source / Host	Rabbit
Reactivity	Human, Mouse, Rat	Clonality	Polyclonal
Applications	WB, IHC	Conjugation	Unconjugated
Form / Buffer	Liquid in 0.42% Potassium phosphate, 0.87% Sodium chloride, pH 7.3, 30% glycerol, and 0.01% sodium azide.		Storage at -20°C

BACKGROUND

Non-specific DNA-binding protein that plays key roles in mitotic nuclear reassembly, chromatin organization, DNA damage response, gene expression and intrinsic immunity against foreign DNA . Contains two non-specific double-stranded DNA (dsDNA)-binding sites which promote DNA cross-bridging . Plays a key role in nuclear membrane reformation at the end of mitosis by driving formation of a single nucleus in a spindle-independent manner . Transiently cross-bridges anaphase chromosomes via its ability to bridge distant DNA sites, leading to the formation of a dense chromatin network at the chromosome ensemble surface that limits membranes to the surface .

APPLICATION

To ensure optimal assay performance, AREX recommends conducting reagent titration tailored to each testing system for optimal detection results.

WB	1:500 - 1:2000
IHC	1:50 - 1:200

*Results are sample-specific. Please refer to your local assay conditions and test parameters for reference.

PRODUCT OVERVIEW

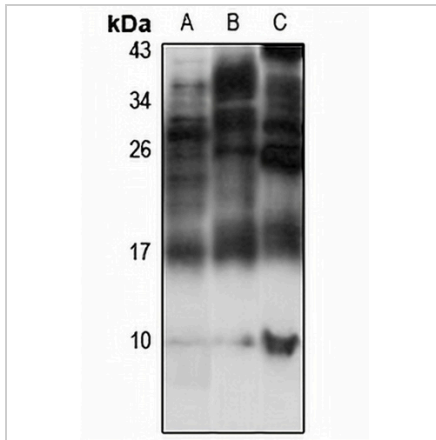
Description	Rabbit polyclonal antibody to BAF
Specificity	Recognizes endogenous levels of BAF protein
Antibody Type	Primary antibody
Immunogen	KLH-conjugated synthetic peptide of human BAF. The exact sequence is proprietary.
Purification	The antibody was purified by immunogen affinity chromatography.
Molecular Weight	Predicted: 10 kD; Observed: 10 kD
Form/Buffer	Liquid in 0.42% Potassium phosphate, 0.87% Sodium chloride, pH 7.3, 30% glycerol, and 0.01% sodium azide.
Alternative Names	BAF; BCRG1; Barrier-to-autointegration factor; Breakpoint cluster region protein 1
Gene Symbol	BANF1
Entrez Gene	8815(Human); 23825(Mouse); 114087(Rat)
SwissProt	O75531(Human); O54962(Mouse); Q9R1T1(Rat)

*AREX continuously optimizes our products. Webpage content may not reflect the latest updates. For inquiries, please contact info@arexbio.com or your local distributor.

*Clone Number, Reactivity, Source/Host and Clonality can be found in the product name and Key Features section above.

DATASHEET**BAF Rabbit Polyclonal Antibody**

CAT. NO. APA15146

DATA

Western blot analysis of BAF expression in HEK293T (A), mouse thymus (B), rat brain (C) whole cell lysates. (Predicted band size: 10 kD; Observed band size: 10 kD)

STORAGE

Store at 4°C short term. For long term storage, store at -20°C, avoiding freeze/thaw cycles.

NOTE

For Research Use Only. Not for diagnostic, therapeutics, prophylactic or in vivo use.