

DATASHEET

BANP Rabbit Polyclonal Antibody

CAT. NO. APA15147

KEY FEATURES

Target	BANP	Source / Host	Rabbit
Reactivity	Human, Mouse, Rat	Clonality	Polyclonal
Applications	WB	Conjugation	Unconjugated
Form / Buffer	Liquid in 0.42% Potassium phosphate, 0.87% Sodium chloride, pH 7.3, 30% glycerol, and 0.01% sodium azide.		Storage at-20°C

BACKGROUND

Controls V(D)J recombination during T-cell development by repressing T-cell receptor (TCR) beta enhancer function . Binds to scaffold/matrix attachment region beta (S/MARbeta), an ATC-rich DNA sequence located upstream of the TCR beta enhancer . Represses cyclin D1 transcription by recruiting HDAC1 to its promoter, thereby diminishing H3K9ac, H3S10ph and H4K8ac levels J recombination during T-cell development by repressing T-cell receptor (TCR) beta enhancer function . Binds to scaffold/matrix attachment region beta (S/MARbeta), an ATC-rich DNA sequence located upstream of the TCR beta enhancer . Represses cyclin D1 transcription by recruiting HDAC1 to its promoter, thereby diminishing H3K9ac, H3S10ph and H4K8ac levels . Promotes TP53 activation, which causes cell cycle arrest .

APPLICATION

To ensure optimal assay performance, AREX recommends conducting reagent titration tailored to each testing system for optimal detection results.

WB	1:500 - 1:2000
----	----------------

*Results are sample-specific. Please refer to your local assay conditions and test parameters for reference.

PRODUCT OVERVIEW

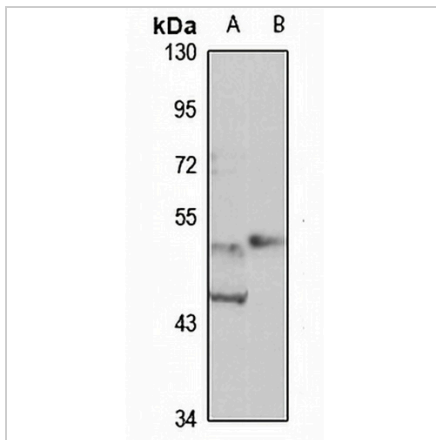
Description	Rabbit polyclonal antibody to BANP
Specificity	Recognizes endogenous levels of BANP protein
Antibody Type	Primary antibody
Immunogen	Recombinant fusion protein of human BANP. The exact sequence is proprietary.
Purification	The antibody was purified by immunogen affinity chromatography.
Molecular Weight	Predicted: 48; Observed: 50 kD
Form/Buffer	Liquid in 0.42% Potassium phosphate, 0.87% Sodium chloride, pH 7.3, 30% glycerol, and 0.01% sodium azide.
Alternative Names	BEND1; SMAR1; Protein BANP; BEN domain-containing protein 1; Btg3-associated nuclear protein; Scaffold/matrix-associated region-1-binding protein
Gene Symbol	BANP
Entrez Gene	54971(Human); 53325(Mouse)
SwissProt	Q8N9N5(Human); Q8VBU8(Mouse)

*AREX continuously optimizes our products. Webpage content may not reflect the latest updates. For inquiries, please contact info@arexbio.com or your local distributor.

*Clone Number, Reactivity, Source/Host and Clonality can be found in the product name and Key Features section above.

DATASHEET**BANP Rabbit Polyclonal Antibody**

CAT. NO. APA15147

DATA

Western blot analysis of BANP expression in HeLa (A), mouse brain (B) whole cell lysates.
(Predicted band size: 48; 50; 51; 53; 54; 55; 56 kD; Observed band size: 50 kD)

STORAGE

Store at 4°C short term. For long term storage, store at -20°C, avoiding freeze/thaw cycles.

NOTE

For Research Use Only. Not for diagnostic, therapeutics, prophylactic or in vivo use.