

DATASHEET

BLVRA Rabbit Polyclonal Antibody

CAT. NO. APA15164

KEY FEATURES

Target	BLVRA	Source / Host	Rabbit
Reactivity	Human, Mouse	Clonality	Polyclonal
Applications	WB, IHC	Conjugation	Unconjugated
Form / Buffer	Liquid in 0.42% Potassium phosphate, 0.87% Sodium chloride, pH 7.3, 30% glycerol, and 0.01% sodium azide.	Storage	at-20°C

BACKGROUND

Reduces the gamma-methene bridge of the open tetrapyrrole, biliverdin IXalpha, to bilirubin with the concomitant oxidation of a NADH or NADPH cofactor . Does not reduce bilirubin IXbeta . Uses the reactants NADH or NADPH depending on the pH; NADH is used at the acidic pH range (6-6.9) and NADPH at the alkaline range (8.5-8.7) . NADPH, however, is the probable reactant in biological systems .

APPLICATION

To ensure optimal assay performance, AREX recommends conducting reagent titration tailored to each testing system for optimal detection results.

WB	1:500 - 1:2000
IHC	1:50 - 1:200

*Results are sample-specific. Please refer to your local assay conditions and test parameters for reference.

PRODUCT OVERVIEW

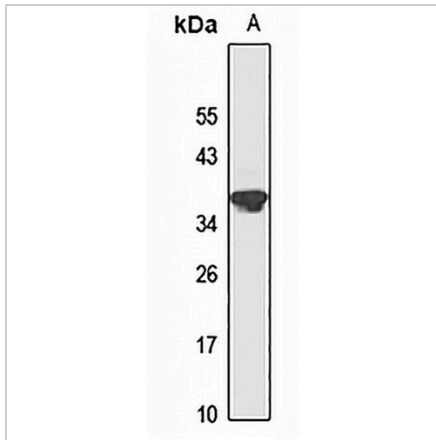
Description	Rabbit polyclonal antibody to BLVRA
Specificity	Recognizes endogenous levels of BLVRA protein
Antibody Type	Primary antibody
Immunogen	Recombinant fusion protein of human BLVRA. The exact sequence is proprietary.
Purification	The antibody was purified by immunogen affinity chromatography.
Molecular Weight	Predicted: 33 kD; Observed: 38 kD
Form/Buffer	Liquid in 0.42% Potassium phosphate, 0.87% Sodium chloride, pH 7.3, 30% glycerol, and 0.01% sodium azide.
Alternative Names	BLVR; BVR; Biliverdin reductase A; BVR A; Biliverdin-IX alpha-reductase
Gene Symbol	BLVRA
Entrez Gene	644(Human); 109778(Mouse)
SwissProt	P53004(Human); Q9CY64(Mouse)

*AREX continuously optimizes our products. Webpage content may not reflect the latest updates. For inquiries, please contact info@arexbio.com or your local distributor.

*Clone Number, Reactivity, Source/Host and Clonality can be found in the product name and Key Features section above.

DATASHEET**BLVRA Rabbit Polyclonal Antibody**

CAT. NO. APA15164

DATA

Western blot analysis of BLVRA expression in mouse kidney (A) whole cell lysates.
(Predicted band size: 33 kD; Observed band size: 38 kD)

STORAGE

Store at 4°C short term. For long term storage, store at -20°C, avoiding freeze/thaw cycles.

NOTE

For Research Use Only. Not for diagnostic, therapeutics, prophylactic or in vivo use.