

DATASHEET

BRAT1 Rabbit Polyclonal Antibody

CAT. NO. APA15167

KEY FEATURES

Target	BRAT1	Source / Host	Rabbit
Reactivity	Human	Clonality	Polyclonal
Applications	WB, IHC	Conjugation	Unconjugated
Form / Buffer	Liquid in 0.42% Potassium phosphate, 0.87% Sodium chloride, pH 7.3, 30% glycerol, and 0.01% sodium azide.		Storage at -20°C

BACKGROUND

Component of a multiprotein complex required for the assembly of the RNA endonuclease module of the integrator complex . Associates with INTS9 and INTS11 in the cytoplasm and blocks the active site of INTS11 to inhibit the endonuclease activity of INTS11 before formation of the full integrator complex . Following dissociation of WDR73 of the complex, BRAT1 facilitates the nuclear import of the INTS9-INTS11 heterodimer . In the nucleus, INTS4 is integrated to the INTS9-INTS11 heterodimer and BRAT1 is released from the mature RNA endonuclease module by inositol hexakisphosphate (InsP6) . BRAT1 is also involved in DNA damage response; activates kinases ATM, SMC1A and PRKDC by modulating their phosphorylation status following ionizing radiation (IR) stress .

APPLICATION

To ensure optimal assay performance, AREX recommends conducting reagent titration tailored to each testing system for optimal detection results.

WB	1:500 - 1:2000
IHC	1:50 - 1:200

*Results are sample-specific. Please refer to your local assay conditions and test parameters for reference.

PRODUCT OVERVIEW

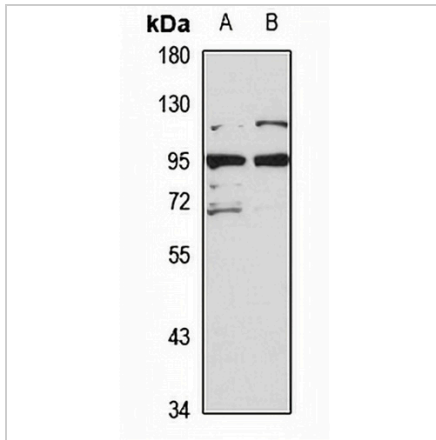
Description	Rabbit polyclonal antibody to BRAT1
Specificity	Recognizes endogenous levels of BRAT1 protein
Antibody Type	Primary antibody
Immunogen	Recombinant fusion protein of human BRAT1. The exact sequence is proprietary.
Purification	The antibody was purified by immunogen affinity chromatography.
Molecular Weight	Predicted: 30; Observed: 95 kD
Form/Buffer	Liquid in 0.42% Potassium phosphate, 0.87% Sodium chloride, pH 7.3, 30% glycerol, and 0.01% sodium azide.
Alternative Names	BAAT1; C7orf27; BRCA1-associated ATM activator 1; BRCA1-associated protein required for ATM activation protein 1
Gene Symbol	BRAT1
Entrez Gene	221927(Human)
SwissProt	Q6PJG6(Human)

*AREX continuously optimizes our products. Webpage content may not reflect the latest updates. For inquiries, please contact info@arexbio.com or your local distributor.

*Clone Number, Reactivity, Source/Host and Clonality can be found in the product name and Key Features section above.

DATASHEET**BRAT1 Rabbit Polyclonal Antibody**

CAT. NO. APA15167

DATA

Western blot analysis of BRAT1 expression in HeLa (A), Jurkat (B) whole cell lysates.
(Predicted band size: 30; 31; 88 kD; Observed band size: 95 kD)

STORAGE

Store at 4°C short term. For long term storage, store at -20°C, avoiding freeze/thaw cycles.

NOTE

For Research Use Only. Not for diagnostic, therapeutics, prophylactic or in vivo use.