

DATASHEET

BRCC3 Rabbit Polyclonal Antibody

CAT. NO. APA15168

KEY FEATURES

Target	BRCC3	Source / Host	Rabbit
Reactivity	Human, Mouse, Rat	Clonality	Polyclonal
Applications	WB	Conjugation	Unconjugated
Form / Buffer	Liquid in 0.42% Potassium phosphate, 0.87% Sodium chloride, pH 7.3, 30% glycerol, and 0.01% sodium azide.		Storage at -20°C

BACKGROUND

Metalloprotease that specifically cleaves 'Lys-63'-linked polyubiquitin chains . Does not have activity toward 'Lys-48'-linked polyubiquitin chains . Component of the BRCA1-A complex, a complex that specifically recognizes 'Lys-63'-linked ubiquitinated histones H2A and H2AX at DNA lesions sites, leading to target the BRCA1-BARD1 heterodimer to sites of DNA damage at double-strand breaks (DSBs) . In the BRCA1-A complex, it specifically removes 'Lys-63'-linked ubiquitin on histones H2A and H2AX, antagonizing the RNF8-dependent ubiquitination at double-strand breaks (DSBs) . Catalytic subunit of the BRISC complex, a multiprotein complex that specifically cleaves 'Lys-63'-linked ubiquitin in various substrates .

APPLICATION

To ensure optimal assay performance, AREX recommends conducting reagent titration tailored to each testing system for optimal detection results.

WB	1:500 - 1:2000
----	----------------

*Results are sample-specific. Please refer to your local assay conditions and test parameters for reference.

PRODUCT OVERVIEW

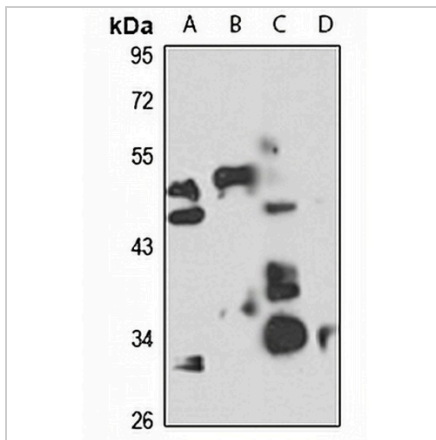
Description	Rabbit polyclonal antibody to BRCC3
Specificity	Recognizes endogenous levels of BRCC3 protein
Antibody Type	Primary antibody
Immunogen	Recombinant fusion protein of human BRCC3. The exact sequence is proprietary.
Purification	The antibody was purified by immunogen affinity chromatography.
Molecular Weight	Predicted: 23; Observed: 33; 36 kD
Form/Buffer	Liquid in 0.42% Potassium phosphate, 0.87% Sodium chloride, pH 7.3, 30% glycerol, and 0.01% sodium azide.
Alternative Names	BRCC36; C6.1A; CXorf53; Lys-63-specific deubiquitinase BRCC36; BRCA1-A complex subunit BRCC36; BRCA1/BRCA2-containing complex subunit 3; BRCA1/BRCA2-containing complex subunit 36; BRISC complex subunit BRCC36
Gene Symbol	BRCC3
Entrez Gene	79184(Human); 210766(Mouse); 316794(Rat)
SwissProt	P46736(Human); P46737(Mouse); B2RYM5(Rat)

*AREX continuously optimizes our products. Webpage content may not reflect the latest updates. For inquiries, please contact info@arexbio.com or your local distributor.

*Clone Number, Reactivity, Source/Host and Clonality can be found in the product name and Key Features section above.

DATASHEET**BRCC3 Rabbit Polyclonal Antibody**

CAT. NO. APA15168

DATA

Western blot analysis of BRCC3 expression in MCF7 (A), Jurkat (B), mouse brain (C), rat liver (D) whole cell lysates. (Predicted band size: 23; 28; 33; 36 kD; Observed band size: 33; 36 kD)

STORAGE

Store at 4°C short term. For long term storage, store at -20°C, avoiding freeze/thaw cycles.

NOTE

For Research Use Only. Not for diagnostic, therapeutics, prophylactic or in vivo use.