

DATASHEET

BRF2 Rabbit Polyclonal Antibody

CAT. NO. APA15172

KEY FEATURES

Target	BRF2	Source / Host	Rabbit
Reactivity	Human, Mouse, Rat	Clonality	Polyclonal
Applications	WB, IHC	Conjugation	Unconjugated
Form / Buffer	Liquid in 0.42% Potassium phosphate, 0.87% Sodium chloride, pH 7.3, 30% glycerol, and 0.01% sodium azide.		Storage at-20°C

BACKGROUND

General activator of RNA polymerase III transcription. Factor exclusively required for RNA polymerase III transcription of genes with promoter elements upstream of the initiation sites. Contributes to the regulation of gene expression; functions as activator in the absence of oxidative stress. Down-regulates expression of target genes in response to oxidative stress. Overexpression protects cells against apoptosis in response to oxidative stress.

APPLICATION

To ensure optimal assay performance, AREX recommends conducting reagent titration tailored to each testing system for optimal detection results.

WB	1:500 - 1:2000
IHC	1:50 - 1:200

*Results are sample-specific. Please refer to your local assay conditions and test parameters for reference.

PRODUCT OVERVIEW

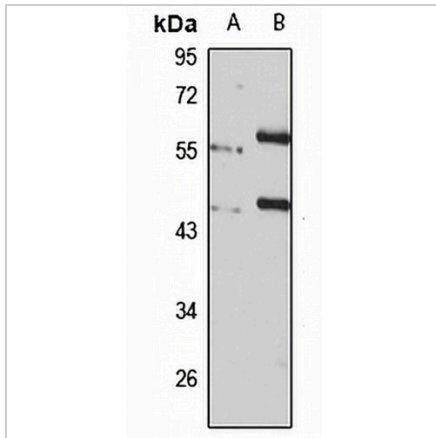
Description	Rabbit polyclonal antibody to BRF2
Specificity	Recognizes endogenous levels of BRF2 protein
Antibody Type	Primary antibody
Immunogen	Recombinant fusion protein of human BRF2. The exact sequence is proprietary.
Purification	The antibody was purified by immunogen affinity chromatography.
Molecular Weight	Predicted: 44; Observed: 62 kD
Form/Buffer	Liquid in 0.42% Potassium phosphate, 0.87% Sodium chloride, pH 7.3, 30% glycerol, and 0.01% sodium azide.
Alternative Names	BRFU; Transcription factor IIIB 50 kDa subunit; TFIIB50; hTFIIB50; B-related factor 2; BRF-2; hBRFU
Gene Symbol	BRF2
Entrez Gene	55290(Human); 66653(Mouse); 306542(Rat)
SwissProt	Q9HAW0(Human); Q3UAW9(Mouse); Q4V8D6(Rat)

*AREX continuously optimizes our products. Webpage content may not reflect the latest updates. For inquiries, please contact info@arexbio.com or your local distributor.

*Clone Number, Reactivity, Source/Host and Clonality can be found in the product name and Key Features section above.

DATASHEET**BRF2 Rabbit Polyclonal Antibody**

CAT. NO. APA15172

DATA

Western blot analysis of BRF2 expression in DU145 (A), mouse lung (B) whole cell lysates. (Predicted band size: 44; 46 kD; Observed band size: 62 kD)

STORAGE

Store at 4°C short term. For long term storage, store at -20°C, avoiding freeze/thaw cycles.

NOTE

For Research Use Only. Not for diagnostic, therapeutics, prophylactic or in vivo use.