

DATASHEET

BZW1 Rabbit Polyclonal Antibody

CAT. NO. APA15181

KEY FEATURES

Target	BZW1	Source / Host	Rabbit
Reactivity	Human, Mouse, Rat	Clonality	Polyclonal
Applications	WB	Conjugation	Unconjugated
Form / Buffer	Liquid in 0.42% Potassium phosphate, 0.87% Sodium chloride, pH 7.3, 30% glycerol, and 0.01% sodium azide.		Storage at-20°C

BACKGROUND

Translation initiation regulator which represses repeat-associated non-AUG (RAN) initiated translation probably by acting as a competitive inhibitor of eukaryotic translation initiation factor 5 (EIF5) function initiated translation probably by acting as a competitive inhibitor of eukaryotic translation initiation factor 5 (EIF5) function . Enhances histone H4 gene transcription but does not seem to bind DNA directly .

APPLICATION

To ensure optimal assay performance, AREX recommends conducting reagent titration tailored to each testing system for optimal detection results.

WB	1:500 - 1:2000
----	----------------

*Results are sample-specific. Please refer to your local assay conditions and test parameters for reference.

PRODUCT OVERVIEW

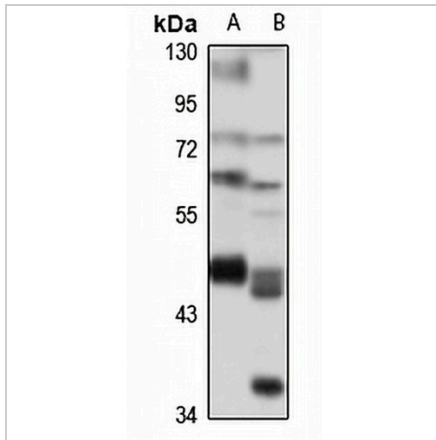
Description	Rabbit polyclonal antibody to BZW1
Specificity	Recognizes endogenous levels of BZW1 protein
Antibody Type	Primary antibody
Immunogen	Recombinant fusion protein of human BZW1. The exact sequence is proprietary.
Purification	The antibody was purified by immunogen affinity chromatography.
Molecular Weight	Predicted: 40; Observed: 48 kD
Form/Buffer	Liquid in 0.42% Potassium phosphate, 0.87% Sodium chloride, pH 7.3, 30% glycerol, and 0.01% sodium azide.
Alternative Names	BZAP45; KIAA0005; Basic leucine zipper and W2 domain-containing protein 1; Protein Orf
Gene Symbol	BZW1
Entrez Gene	9689(Human); 66882(Mouse); 363232(Rat)
SwissProt	Q7L1Q6(Human); Q9CQC6(Mouse); Q6P7P5(Rat)

*AREX continuously optimizes our products. Webpage content may not reflect the latest updates. For inquiries, please contact info@arexbio.com or your local distributor.

*Clone Number, Reactivity, Source/Host and Clonality can be found in the product name and Key Features section above.

DATASHEET**BZW1 Rabbit Polyclonal Antibody**

CAT. NO. APA15181

DATA

Western blot analysis of BZW1 expression in HeLa (A), mouse liver (B) whole cell lysates. (Predicted band size: 40; 48; 51 kD; Observed band size: 48 kD)

STORAGE

Store at 4°C short term. For long term storage, store at -20°C, avoiding freeze/thaw cycles.

NOTE

For Research Use Only. Not for diagnostic, therapeutics, prophylactic or in vivo use.