

**DATASHEET**

**BZW2 Rabbit Polyclonal Antibody**

CAT. NO. APA15182

**KEY FEATURES**

Target	BZW2	Source / Host	Rabbit
Reactivity	Human, Mouse, Rat	Clonality	Polyclonal
Applications	WB, IF/ICC	Conjugation	Unconjugated
Form / Buffer	Liquid in 0.42% Potassium phosphate, 0.87% Sodium chloride, pH 7.3, 30% glycerol, and 0.01% sodium azide.		Storage at-20°C

**BACKGROUND**

Translation initiation regulator which represses non-AUG initiated translation and repeat-associated non-AUG (RAN) initiated translation by acting as a competitive inhibitor of eukaryotic translation initiation factor 5 (EIF5) function initiated translation by acting as a competitive inhibitor of eukaryotic translation initiation factor 5 (EIF5) function . Increases the accuracy of translation initiation by impeding EIF5-dependent translation from non-AUG codons by competing with it for interaction with EIF2S2 within the 43S pre-initiation complex (PIC) in an EIF3C-binding dependent manner .

**APPLICATION**

To ensure optimal assay performance, AREX recommends conducting reagent titration tailored to each testing system for optimal detection results.

WB	1:500 - 1:2000
IF/ICC	1:50 - 1:200

\*Results are sample-specific. Please refer to your local assay conditions and test parameters for reference.

**PRODUCT OVERVIEW**

Description	Rabbit polyclonal antibody to BZW2
Specificity	Recognizes endogenous levels of BZW2 protein
Antibody Type	Primary antibody
Immunogen	Recombinant fusion protein of human BZW2. The exact sequence is proprietary.
Purification	The antibody was purified by immunogen affinity chromatography.
Molecular Weight	Predicted: 22; Observed: 48 kD
Form/Buffer	Liquid in 0.42% Potassium phosphate, 0.87% Sodium chloride, pH 7.3, 30% glycerol, and 0.01% sodium azide.
Alternative Names	Basic leucine zipper and W2 domain-containing protein 2
Gene Symbol	BZW2
Entrez Gene	28969(Human); 66912(Mouse); 171439(Rat)
SwissProt	Q9Y6E2(Human); Q91VK1(Mouse); Q9WTT7(Rat)

\*AREX continuously optimizes our products. Webpage content may not reflect the latest updates. For inquiries, please contact [info@arexbio.com](mailto:info@arexbio.com) or your local distributor.

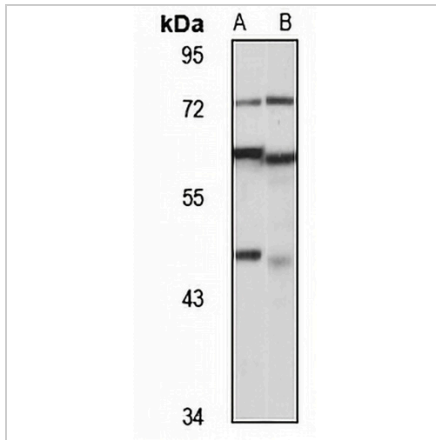
\*Clone Number, Reactivity, Source/Host and Clonality can be found in the product name and Key Features section above.

**DATASHEET**

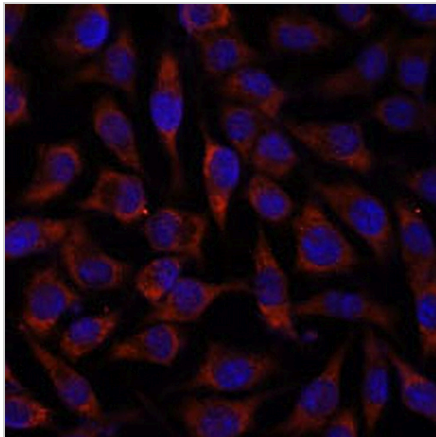
**BZW2 Rabbit Polyclonal Antibody**

CAT. NO. APA15182

**DATA**



Western blot analysis of BZW2 expression in Jurkat (A), mouse heart (B) whole cell lysates. (Predicted band size: 22; 48 kD; Observed band size: 48 kD)



Immunofluorescent analysis of BZW2 staining in L929 cells. Formalin-fixed cells were permeabilized with 0.1% Triton X-100 in TBS for 5-10 minutes and blocked with 3% BSA-PBS for 30 minutes at room temperature. Cells were probed with the primary antibody in 3% BSA-PBS and incubated overnight at 4 °C in a humidified chamber. Cells were washed with PBST and incubated with a AREX® Fluor 594-conjugated secondary antibody (red) in PBS at room temperature in the dark. DAPI was used to stain the cell nuclei (blue).

**STORAGE**

Store at 4°C short term. For long term storage, store at -20°C, avoiding freeze/thaw cycles.

**NOTE**

For Research Use Only. Not for diagnostic, therapeutics, prophylactic or in vivo use.