

## DATASHEET

# Gi24 Rabbit Polyclonal Antibody

CAT. NO. APA15183

### KEY FEATURES

Target	Gi24	Source / Host	Rabbit
Reactivity	Human, Mouse	Clonality	Polyclonal
Applications	WB	Conjugation	Unconjugated
Form / Buffer	Liquid in 0.42% Potassium phosphate, 0.87% Sodium chloride, pH 7.3, 30% glycerol, and 0.01% sodium azide.		Storage at -20°C

### BACKGROUND

Immunoregulatory receptor which inhibits the T-cell response . May promote differentiation of embryonic stem cells, by inhibiting BMP4 signaling . May stimulate MMP14-mediated MMP2 activation .

### APPLICATION

To ensure optimal assay performance, AREX recommends conducting reagent titration tailored to each testing system for optimal detection results.

WB	1:500 - 1:2000
----	----------------

\*Results are sample-specific. Please refer to your local assay conditions and test parameters for reference.

### PRODUCT OVERVIEW

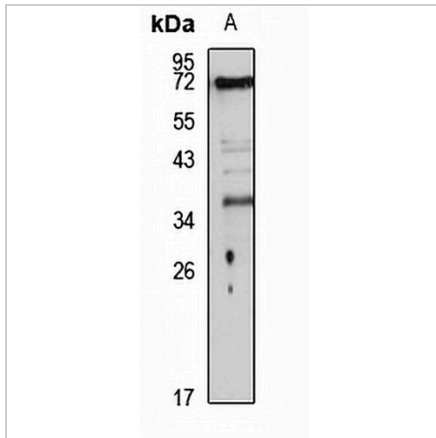
Description	Rabbit polyclonal antibody to Gi24
Specificity	Recognizes endogenous levels of Gi24 protein
Antibody Type	Primary antibody
Immunogen	Recombinant fusion protein of human Gi24. The exact sequence is proprietary.
Purification	The antibody was purified by immunogen affinity chromatography.
Molecular Weight	Predicted: 33 kD; Observed: 37 kD
Form/Buffer	Liquid in 0.42% Potassium phosphate, 0.87% Sodium chloride, pH 7.3, 30% glycerol, and 0.01% sodium azide.
Alternative Names	C10orf54; SISP1; VISTA; Platelet receptor Gi24; Stress-induced secreted protein-1; Sisp-1
Gene Symbol	VSIR
Entrez Gene	64115(Human); 74048(Mouse)
SwissProt	Q9H7M9(Human); Q9D659(Mouse)

\*AREX continuously optimizes our products. Webpage content may not reflect the latest updates. For inquiries, please contact [info@arexbio.com](mailto:info@arexbio.com) or your local distributor.

\*Clone Number, Reactivity, Source/Host and Clonality can be found in the product name and Key Features section above.

**DATASHEET****Gi24 Rabbit Polyclonal Antibody**

CAT. NO. APA15183

**DATA**

Western blot analysis of Gi24 expression in A549 (A) whole cell lysates. (Predicted band size: 33 kD; Observed band size: 37 kD)

**STORAGE**

Store at 4°C short term. For long term storage, store at -20°C, avoiding freeze/thaw cycles.

**NOTE**

For Research Use Only. Not for diagnostic, therapeutics, prophylactic or in vivo use.