

DATASHEET

C12orf29 Rabbit Polyclonal Antibody

CAT. NO. APA15186

KEY FEATURES

Target	C12orf29	Source / Host	Rabbit
Reactivity	Human, Mouse, Rat	Clonality	Polyclonal
Applications	WB	Conjugation	Unconjugated
Form / Buffer	Liquid in 0.42% Potassium phosphate, 0.87% Sodium chloride, pH 7.3, 30% glycerol, and 0.01% sodium azide.		Storage at -20°C

BACKGROUND

Functions as an RNA ligase, in vitro . The ligation reaction entails three nucleotidyl transfer steps . In the first step, the RNA ligase reacts with ATP in the absence of nucleic acid to form a covalent ligase-AMP intermediate and release pyrophosphate . In step 2, the ligase-AMP binds to the nucleic acid and transfers the adenylate to the 5'-PO4 terminus to form an adenylated intermediate . In step 3, the RNA ligase directs the attack of the 3'-OH on the 5'-phosphoanhydride linkage, resulting in a repaired 3'-5' phosphodiester and release of AMP . Exhibits selectivity for single-stranded RNA substrates and may not have nick-sealing activity on double-stranded DNA-RNA hybrids .

APPLICATION

To ensure optimal assay performance, AREX recommends conducting reagent titration tailored to each testing system for optimal detection results.

WB	1:500 - 1:2000
----	----------------

*Results are sample-specific. Please refer to your local assay conditions and test parameters for reference.

PRODUCT OVERVIEW

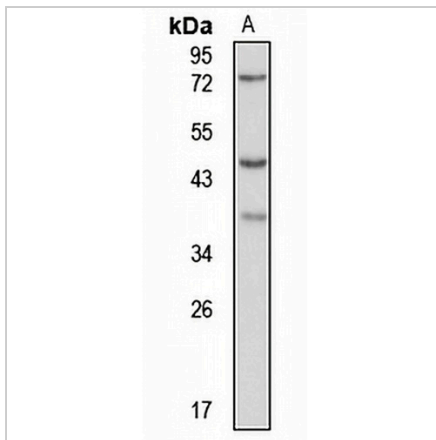
Description	Rabbit polyclonal antibody to C12orf29
Specificity	Recognizes endogenous levels of C12orf29 protein
Antibody Type	Primary antibody
Immunogen	Recombinant fusion protein of human C12orf29. The exact sequence is proprietary.
Purification	The antibody was purified by immunogen affinity chromatography.
Molecular Weight	Predicted: 4; Observed: 37 kD
Form/Buffer	Liquid in 0.42% Potassium phosphate, 0.87% Sodium chloride, pH 7.3, 30% glycerol, and 0.01% sodium azide.
Alternative Names	Uncharacterized protein C12orf29
Gene Symbol	C12orf29
Entrez Gene	91298(Human); 68281(Mouse); 314788(Rat)
SwissProt	Q8N999(Human); Q8BHN7(Mouse); Q6AXM9(Rat)

*AREX continuously optimizes our products. Webpage content may not reflect the latest updates. For inquiries, please contact info@arexbio.com or your local distributor.

*Clone Number, Reactivity, Source/Host and Clonality can be found in the product name and Key Features section above.

DATASHEET**C12orf29 Rabbit Polyclonal Antibody**

CAT. NO. APA15186

DATA

Western blot analysis of C12orf29 expression in HeLa (A) whole cell lysates. (Predicted band size: 4; 34; 37 kD; Observed band size: 37 kD)

STORAGE

Store at 4°C short term. For long term storage, store at -20°C, avoiding freeze/thaw cycles.

NOTE

For Research Use Only. Not for diagnostic, therapeutics, prophylactic or in vivo use.