

DATASHEET

IL-25 Rabbit Polyclonal Antibody

CAT. NO. APA15187

KEY FEATURES

Target	IL-25	Source / Host	Rabbit
Reactivity	Human, Mouse, Rat	Clonality	Polyclonal
Applications	WB	Conjugation	Unconjugated
Form / Buffer	Liquid in 0.42% Potassium phosphate, 0.87% Sodium chloride, pH 7.3, 30% glycerol, and 0.01% sodium azide.		Storage at -20°C

BACKGROUND

Bone marrow-derived monocyte and paracrine-acting protein that promotes cardiac myocyte survival and adaptive angiogenesis for cardiac protection and/or repair after myocardial infarction (MI). Stimulates endothelial cell proliferation through a MAPK1/3-, STAT3- and CCND1-mediated signaling pathway. Inhibits cardiac myocyte apoptosis in a PI3K/AKT-dependent signaling pathway. Involved in endothelial cell proliferation and angiogenesis. Stimulates endothelial cell proliferation through a MAPK1/3-, STAT3- and CCND1-mediated signaling pathway. Inhibits cardiac myocyte apoptosis in a PI3K/AKT-dependent signaling pathway. Involved in endothelial cell proliferation and angiogenesis.

APPLICATION

To ensure optimal assay performance, AREX recommends conducting reagent titration tailored to each testing system for optimal detection results.

WB	1:500 - 1:2000
----	----------------

*Results are sample-specific. Please refer to your local assay conditions and test parameters for reference.

PRODUCT OVERVIEW

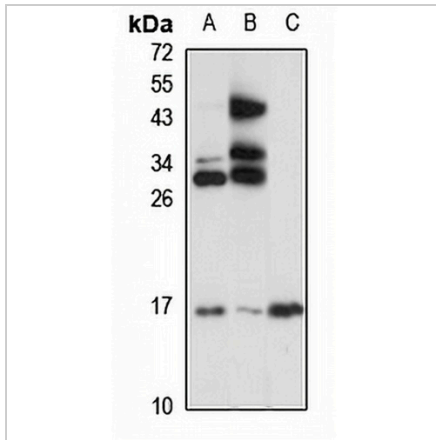
Description	Rabbit polyclonal antibody to IL-25
Specificity	Recognizes endogenous levels of IL-25 protein
Antibody Type	Primary antibody
Immunogen	Recombinant fusion protein of human IL-25. The exact sequence is proprietary.
Purification	The antibody was purified by immunogen affinity chromatography.
Molecular Weight	Predicted: 18 kD; Observed: 15 kD
Form/Buffer	Liquid in 0.42% Potassium phosphate, 0.87% Sodium chloride, pH 7.3, 30% glycerol, and 0.01% sodium azide.
Alternative Names	IL25; UPF0556 protein C19orf10; Interleukin-25; IL-25; Stromal cell-derived growth factor SF20
Gene Symbol	C19orf10
Entrez Gene	56005(Human); 28106(Mouse)
SwissProt	Q969H8(Human); Q9CPT4(Mouse)

*AREX continuously optimizes our products. Webpage content may not reflect the latest updates. For inquiries, please contact info@arexbio.com or your local distributor.

*Clone Number, Reactivity, Source/Host and Clonality can be found in the product name and Key Features section above.

DATASHEET**IL-25 Rabbit Polyclonal Antibody**

CAT. NO. APA15187

DATA

Western blot analysis of IL-25 expression in A431 (A), mouse liver (B), rat pancreas (C) whole cell lysates. (Predicted band size: 18 kD; Observed band size: 15 kD)

STORAGE

Store at 4°C short term. For long term storage, store at -20°C, avoiding freeze/thaw cycles.

NOTE

For Research Use Only. Not for diagnostic, therapeutics, prophylactic or in vivo use.