

DATASHEET

CTRP4 Rabbit Polyclonal Antibody

CAT. NO. APA15188

KEY FEATURES

Target	CTRP4	Source / Host	Rabbit
Reactivity	Human, Mouse	Clonality	Polyclonal
Applications	WB	Conjugation	Unconjugated
Form / Buffer	Liquid in 0.42% Potassium phosphate, 0.87% Sodium chloride, pH 7.3, 30% glycerol, and 0.01% sodium azide.		Storage at -20°C

BACKGROUND

May be involved in the regulation of the inflammatory network. Its role as pro- or anti-inflammatory seems to be context dependent. Seems to have some role in regulating food intake and energy balance when administered in the brain. This effect is sustained over a two-day period, and it is accompanied by decreased expression of orexigenic neuropeptides in the hypothalamus 3 hours post-injection.

APPLICATION

To ensure optimal assay performance, AREX recommends conducting reagent titration tailored to each testing system for optimal detection results.

WB	1:500 - 1:2000
----	----------------

*Results are sample-specific. Please refer to your local assay conditions and test parameters for reference.

PRODUCT OVERVIEW

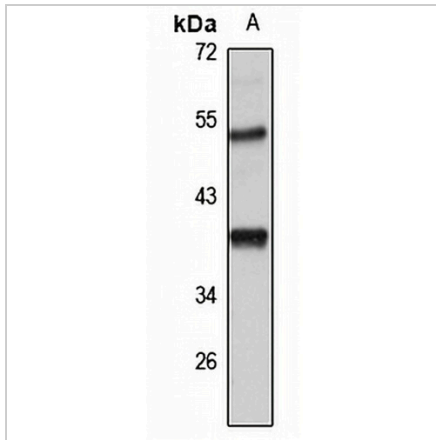
Description	Rabbit polyclonal antibody to CTRP4
Specificity	Recognizes endogenous levels of CTRP4 protein
Antibody Type	Primary antibody
Immunogen	Recombinant fusion protein of human CTRP4. The exact sequence is proprietary.
Purification	The antibody was purified by immunogen affinity chromatography.
Molecular Weight	Predicted: 35 kD; Observed: 38 kD
Form/Buffer	Liquid in 0.42% Potassium phosphate, 0.87% Sodium chloride, pH 7.3, 30% glycerol, and 0.01% sodium azide.
Alternative Names	CTRP4; Complement C1q tumor necrosis factor-related protein 4
Gene Symbol	C1QTNF4
Entrez Gene	114900(Human); 67445(Mouse)
SwissProt	Q9BXJ3(Human); Q8R066(Mouse)

*AREX continuously optimizes our products. Webpage content may not reflect the latest updates. For inquiries, please contact info@arexbio.com or your local distributor.

*Clone Number, Reactivity, Source/Host and Clonality can be found in the product name and Key Features section above.

DATASHEET**CTRP4 Rabbit Polyclonal Antibody**

CAT. NO. APA15188

DATA

Western blot analysis of CTRP4 expression in U87MG (A) whole cell lysates. (Predicted band size: 35 kD; Observed band size: 38 kD)

STORAGE

Store at 4°C short term. For long term storage, store at -20°C, avoiding freeze/thaw cycles.

NOTE

For Research Use Only. Not for diagnostic, therapeutics, prophylactic or in vivo use.