

DATASHEET

Complement C2 Rabbit Polyclonal Antibody

CAT. NO. APA15190

KEY FEATURES

Target	Complement C2	Source / Host	Rabbit
Reactivity	Human, Mouse	Clonality	Polyclonal
Applications	WB	Conjugation	Unconjugated
Form / Buffer	Liquid in 0.42% Potassium phosphate, 0.87% Sodium chloride, pH 7.3, 30% glycerol, and 0.01% sodium azide.		Storage at-20°C

BACKGROUND

Precursor of the catalytic component of the C3 and C5 convertase complexes, which are part of the complement pathway, a cascade of proteins that leads to phagocytosis and breakdown of pathogens and signaling that strengthens the adaptive immune system . Component C2 is part of the classical, lectin and GZMK complement systems .

APPLICATION

To ensure optimal assay performance, AREX recommends conducting reagent titration tailored to each testing system for optimal detection results.

WB	1:500 - 1:2000
----	----------------

*Results are sample-specific. Please refer to your local assay conditions and test parameters for reference.

PRODUCT OVERVIEW

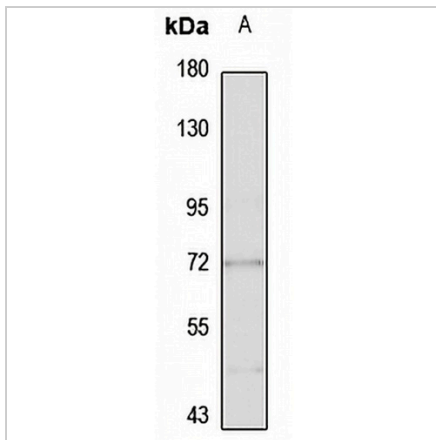
Description	Rabbit polyclonal antibody to Complement C2
Specificity	Recognizes endogenous levels of Complement C2 protein
Antibody Type	Primary antibody
Immunogen	Recombinant fusion protein of human Complement C2. The exact sequence is proprietary.
Purification	The antibody was purified by immunogen affinity chromatography.
Molecular Weight	Predicted: 60; Observed: 70; 110 kD
Form/Buffer	Liquid in 0.42% Potassium phosphate, 0.87% Sodium chloride, pH 7.3, 30% glycerol, and 0.01% sodium azide.
Alternative Names	Complement C2; C3/C5 convertase
Gene Symbol	C2
Entrez Gene	717(Human); 12263(Mouse)
SwissProt	P06681(Human); P21180(Mouse)

*AREX continuously optimizes our products. Webpage content may not reflect the latest updates. For inquiries, please contact info@arexbio.com or your local distributor.

*Clone Number, Reactivity, Source/Host and Clonality can be found in the product name and Key Features section above.

DATASHEET**Complement C2 Rabbit Polyclonal Antibody**

CAT. NO. APA15190

DATA

Western blot analysis of Complement C2 expression in U87MG (A) whole cell lysates.
(Predicted band size: 60; 69; 83 kD; Observed band size: 70; 110 kD)

STORAGE

Store at 4°C short term. For long term storage, store at -20°C, avoiding freeze/thaw cycles.

NOTE

For Research Use Only. Not for diagnostic, therapeutics, prophylactic or in vivo use.