

DATASHEET

MO25L Rabbit Polyclonal Antibody

CAT. NO. APA15198

KEY FEATURES

Target	MO25L	Source / Host	Rabbit
Reactivity	Human, Mouse	Clonality	Polyclonal
Applications	WB	Conjugation	Unconjugated
Form / Buffer	Liquid in 0.42% Potassium phosphate, 0.87% Sodium chloride, pH 7.3, 30% glycerol, and 0.01% sodium azide.		Storage at -20°C

BACKGROUND

Component of a complex that binds and activates STK11/LKB1. In the complex, required to stabilize the interaction between CAB39/MO25 (CAB39/MO25alpha or CAB39L/MO25beta) and STK11/LKB1 .

APPLICATION

To ensure optimal assay performance, AREX recommends conducting reagent titration tailored to each testing system for optimal detection results.

WB	1:500 - 1:2000
----	----------------

*Results are sample-specific. Please refer to your local assay conditions and test parameters for reference.

PRODUCT OVERVIEW

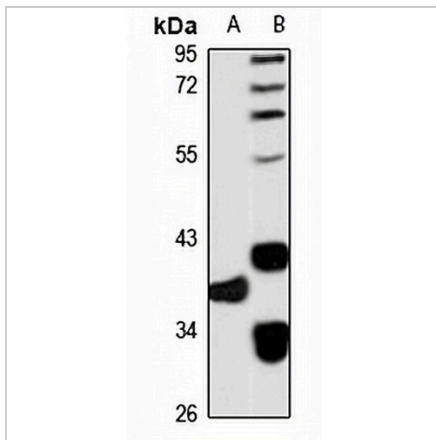
Description	Rabbit polyclonal antibody to MO25L
Specificity	Recognizes endogenous levels of MO25L protein
Antibody Type	Primary antibody
Immunogen	Recombinant fusion protein of human MO25L. The exact sequence is proprietary.
Purification	The antibody was purified by immunogen affinity chromatography.
Molecular Weight	Predicted: 39 kD; Observed: 37-39 kD
Form/Buffer	Liquid in 0.42% Potassium phosphate, 0.87% Sodium chloride, pH 7.3, 30% glycerol, and 0.01% sodium azide.
Alternative Names	Calcium-binding protein 39-like; Antigen MLAA-34; MO25beta; Mo25-like protein
Gene Symbol	CAB39L
Entrez Gene	81617(Human); 69008(Mouse)
SwissProt	Q9H9S4(Human); Q9DB16(Mouse)

*AREX continuously optimizes our products. Webpage content may not reflect the latest updates. For inquiries, please contact info@arexbio.com or your local distributor.

*Clone Number, Reactivity, Source/Host and Clonality can be found in the product name and Key Features section above.

DATASHEET**MO25L Rabbit Polyclonal Antibody**

CAT. NO. APA15198

DATA

Western blot analysis of MO25L expression in K562 (A), mouse kidney (B) whole cell lysates. (Predicted band size: 39 kD; Observed band size: 37-39 kD)

STORAGE

Store at 4°C short term. For long term storage, store at -20°C, avoiding freeze/thaw cycles.

NOTE

For Research Use Only. Not for diagnostic, therapeutics, prophylactic or in vivo use.