

**DATASHEET**

**CALHM2 Rabbit Polyclonal Antibody**

CAT. NO. APA15202

**KEY FEATURES**

Target	CALHM2	Source / Host	Rabbit
Reactivity	Human, Mouse, Rat	Clonality	Polyclonal
Applications	WB	Conjugation	Unconjugated
Form / Buffer	Liquid in 0.42% Potassium phosphate, 0.87% Sodium chloride, pH 7.3, 30% glycerol, and 0.01% sodium azide.		Storage at-20°C

**BACKGROUND**

Pore-forming subunit of Ca(2+) homeostasis modulator channels. Mediates ATP release from astrocytes and ATP-induced Ca(2+) influx in microglia thus regulating neuronal ATP and Ca(2+) homeostasis, synaptic transmission and neuroinflammatory response. May form intercellular gap junctions. The gating mechanism remains unknown.

**APPLICATION**

To ensure optimal assay performance, AREX recommends conducting reagent titration tailored to each testing system for optimal detection results.

WB	1:500 - 1:2000
----	----------------

\*Results are sample-specific. Please refer to your local assay conditions and test parameters for reference.

**PRODUCT OVERVIEW**

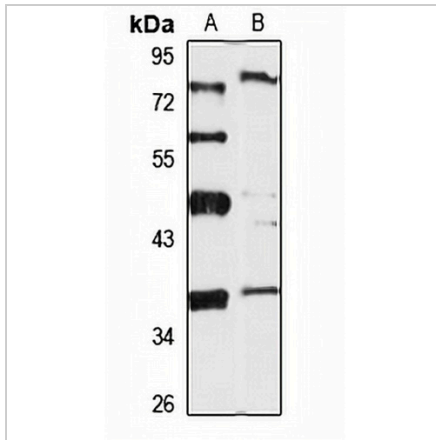
Description	Rabbit polyclonal antibody to CALHM2
Specificity	Recognizes endogenous levels of CALHM2 protein
Antibody Type	Primary antibody
Immunogen	Recombinant fusion protein of human CALHM2. The exact sequence is proprietary.
Purification	The antibody was purified by immunogen affinity chromatography.
Molecular Weight	Predicted: 21; Observed: 36 kD
Form/Buffer	Liquid in 0.42% Potassium phosphate, 0.87% Sodium chloride, pH 7.3, 30% glycerol, and 0.01% sodium azide.
Alternative Names	FAM26B; Calcium homeostasis modulator protein 2; Protein FAM26B
Gene Symbol	CALHM2
Entrez Gene	51063(Human); 72691(Mouse); 294019(Rat)
SwissProt	Q9HA72(Human); Q8VEC4(Mouse); Q5RJQ8(Rat)

\*AREX continuously optimizes our products. Webpage content may not reflect the latest updates. For inquiries, please contact [info@arexbio.com](mailto:info@arexbio.com) or your local distributor.

\*Clone Number, Reactivity, Source/Host and Clonality can be found in the product name and Key Features section above.

**DATASHEET****CALHM2 Rabbit Polyclonal Antibody**

CAT. NO. APA15202

**DATA**

Western blot analysis of CALHM2 expression in HeLa (A), mouse lung (B) whole cell lysates. (Predicted band size: 21; 23; 36 kD; Observed band size: 36 kD)

**STORAGE**

Store at 4°C short term. For long term storage, store at -20°C, avoiding freeze/thaw cycles.

**NOTE**

For Research Use Only. Not for diagnostic, therapeutics, prophylactic or in vivo use.