

## DATASHEET

# CAP1 Rabbit Polyclonal Antibody

CAT. NO. APA15210

### KEY FEATURES

Target	CAP1	Source / Host	Rabbit
Reactivity	Human, Mouse, Rat	Clonality	Polyclonal
Applications	WB	Conjugation	Unconjugated
Form / Buffer	Liquid in 0.42% Potassium phosphate, 0.87% Sodium chloride, pH 7.3, 30% glycerol, and 0.01% sodium azide.		Storage at -20°C

### BACKGROUND

Directly regulates filament dynamics and has been implicated in a number of complex developmental and morphological processes, including mRNA localization and the establishment of cell polarity.

### APPLICATION

To ensure optimal assay performance, AREX recommends conducting reagent titration tailored to each testing system for optimal detection results.

WB	1:500 - 1:2000
----	----------------

\*Results are sample-specific. Please refer to your local assay conditions and test parameters for reference.

### PRODUCT OVERVIEW

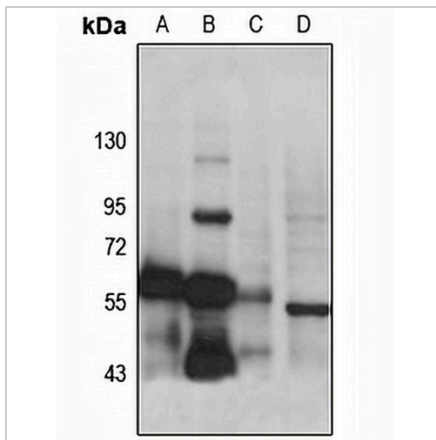
Description	Rabbit polyclonal antibody to CAP1
Specificity	Recognizes endogenous levels of CAP1 protein
Antibody Type	Primary antibody
Immunogen	KLH-conjugated synthetic peptide of human CAP1. The exact sequence is proprietary.
Purification	The antibody was purified by immunogen affinity chromatography.
Molecular Weight	Predicted: 51 kD; Observed: 60 kD
Form/Buffer	Liquid in 0.42% Potassium phosphate, 0.87% Sodium chloride, pH 7.3, 30% glycerol, and 0.01% sodium azide.
Alternative Names	CAP; Adenylyl cyclase-associated protein 1; CAP 1
Gene Symbol	CAP1
Entrez Gene	10487(Human); 12331(Mouse); 64185(Rat)
SwissProt	Q01518(Human); P40124(Mouse); Q08163(Rat)

\*AREX continuously optimizes our products. Webpage content may not reflect the latest updates. For inquiries, please contact [info@arexbio.com](mailto:info@arexbio.com) or your local distributor.

\*Clone Number, Reactivity, Source/Host and Clonality can be found in the product name and Key Features section above.

**DATASHEET****CAP1 Rabbit Polyclonal Antibody**

CAT. NO. APA15210

**DATA**

Western blot analysis of CAP1 expression in HEK293T (A), A431 (B), rat thymus (C), mouse thymus (D) whole cell lysates. (Predicted band size: 51 kD; Observed band size: 60 kD)

**STORAGE**

Store at 4°C short term. For long term storage, store at -20°C, avoiding freeze/thaw cycles.

**NOTE**

For Research Use Only. Not for diagnostic, therapeutics, prophylactic or in vivo use.