

**DATASHEET**

**CAP2 Rabbit Polyclonal Antibody**

CAT. NO. APA15211

**KEY FEATURES**

Target	CAP2	Source / Host	Rabbit
Reactivity	Human, Mouse, Rat	Clonality	Polyclonal
Applications	WB	Conjugation	Unconjugated
Form / Buffer	Liquid in 0.42% Potassium phosphate, 0.87% Sodium chloride, pH 7.3, 30% glycerol, and 0.01% sodium azide.		Storage at -20°C

**BACKGROUND**

Involved in the regulation of actin polymerization.

**APPLICATION**

To ensure optimal assay performance, AREX recommends conducting reagent titration tailored to each testing system for optimal detection results.

WB	1:500 - 1:2000
----	----------------

\*Results are sample-specific. Please refer to your local assay conditions and test parameters for reference.

**PRODUCT OVERVIEW**

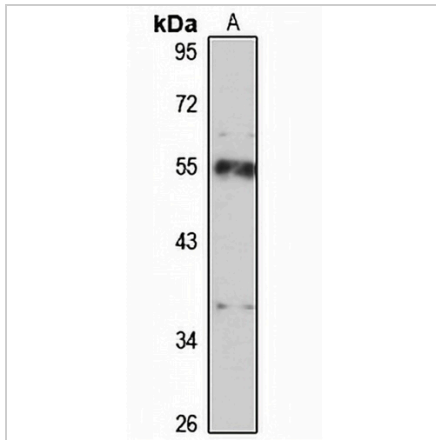
Description	Rabbit polyclonal antibody to CAP2
Specificity	Recognizes endogenous levels of CAP2 protein
Antibody Type	Primary antibody
Immunogen	Recombinant fusion protein of human CAP2. The exact sequence is proprietary.
Purification	The antibody was purified by immunogen affinity chromatography.
Molecular Weight	Predicted: 24; Observed: 55 kD
Form/Buffer	Liquid in 0.42% Potassium phosphate, 0.87% Sodium chloride, pH 7.3, 30% glycerol, and 0.01% sodium azide.
Alternative Names	Adenylyl cyclase-associated protein 2; CAP 2
Gene Symbol	CAP2
Entrez Gene	10486(Human); 67252(Mouse); 116653(Rat)
SwissProt	P40123(Human); Q9CYT6(Mouse); P52481(Rat)

\*AREX continuously optimizes our products. Webpage content may not reflect the latest updates. For inquiries, please contact [info@arexbio.com](mailto:info@arexbio.com) or your local distributor.

\*Clone Number, Reactivity, Source/Host and Clonality can be found in the product name and Key Features section above.

**DATASHEET****CAP2 Rabbit Polyclonal Antibody**

CAT. NO. APA15211

**DATA**

Western blot analysis of CAP2 expression in HepG2 (A) whole cell lysates. (Predicted band size: 24; 45; 52 kD; Observed band size: 55 kD)

**STORAGE**

Store at 4°C short term. For long term storage, store at -20°C, avoiding freeze/thaw cycles.

**NOTE**

For Research Use Only. Not for diagnostic, therapeutics, prophylactic or in vivo use.