

DATASHEET

Caprin2 Rabbit Polyclonal Antibody

CAT. NO. APA15213

KEY FEATURES

Target	Caprin2	Source / Host	Rabbit
Reactivity	Human, Mouse	Clonality	Polyclonal
Applications	WB	Conjugation	Unconjugated
Form / Buffer	Liquid in 0.42% Potassium phosphate, 0.87% Sodium chloride, pH 7.3, 30% glycerol, and 0.01% sodium azide.		Storage at-20°C

BACKGROUND

Promotes phosphorylation of the Wnt coreceptor LRP6, leading to increased activity of the canonical Wnt signaling pathway . Facilitates constitutive LRP6 phosphorylation by CDK14/CCNY during G2/M stage of the cell cycle, which may potentiate cells for Wnt signaling . May regulate the transport and translation of mRNAs, modulating for instance the expression of proteins involved in synaptic plasticity in neurons . Involved in regulation of growth as erythroblasts shift from a highly proliferative state towards their terminal phase of differentiation . May be involved in apoptosis .

APPLICATION

To ensure optimal assay performance, AREX recommends conducting reagent titration tailored to each testing system for optimal detection results.

WB	1:500 - 1:2000
----	----------------

*Results are sample-specific. Please refer to your local assay conditions and test parameters for reference.

PRODUCT OVERVIEW

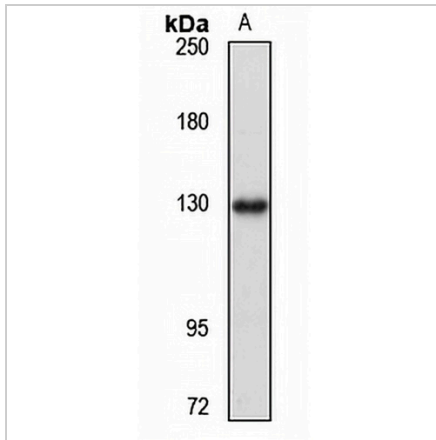
Description	Rabbit polyclonal antibody to Caprin2
Specificity	Recognizes endogenous levels of Caprin2 protein
Antibody Type	Primary antibody
Immunogen	Recombinant fusion protein of human Caprin2. The exact sequence is proprietary.
Purification	The antibody was purified by immunogen affinity chromatography.
Molecular Weight	Predicted: 126 kD; Observed: 126 kD
Form/Buffer	Liquid in 0.42% Potassium phosphate, 0.87% Sodium chloride, pH 7.3, 30% glycerol, and 0.01% sodium azide.
Alternative Names	C1QDC1; EEG1; KIAA1873; RNG140; Caprin-2; C1q domain-containing protein 1; Cytoplasmic activation/proliferation-associated protein 2; Gastric cancer multidrug resistance-associated protein; Protein EEG-1; RNA granule protein 140
Gene Symbol	CAPRIN2
Entrez Gene	65981(Human)
SwissProt	Q6IMN6(Human)

*AREX continuously optimizes our products. Webpage content may not reflect the latest updates. For inquiries, please contact info@arexbio.com or your local distributor.

*Clone Number, Reactivity, Source/Host and Clonality can be found in the product name and Key Features section above.

DATASHEET**Caprin2 Rabbit Polyclonal Antibody**

CAT. NO. APA15213

DATA

Western blot analysis of Caprin2 expression in HEK293T (A) whole cell lysates. (Predicted band size: 126 kD; Observed band size: 126 kD)

STORAGE

Store at 4°C short term. For long term storage, store at -20°C, avoiding freeze/thaw cycles.

NOTE

For Research Use Only. Not for diagnostic, therapeutics, prophylactic or in vivo use.