

**DATASHEET**

**CASC5 Rabbit Polyclonal Antibody**

CAT. NO. APA15214

**KEY FEATURES**

Target	CASC5	Source / Host	Rabbit
Reactivity	Human	Clonality	Polyclonal
Applications	WB, IHC, IF/ICC	Conjugation	Unconjugated
Form / Buffer	Liquid in 0.42% Potassium phosphate, 0.87% Sodium chloride, pH 7.3, 30% glycerol, and 0.01% sodium azide.		Storage at -20°C

**BACKGROUND**

Acts as a component of the outer kinetochore KNL1 complex that serves as a docking point for spindle assembly checkpoint components and mediates microtubule-kinetochore interactions . Kinetochores, consisting of a centromere-associated inner segment and a microtubule-contacting outer segment, play a crucial role in chromosome segregation by mediating the physical connection between centromeric DNA and spindle microtubules .

**APPLICATION**

To ensure optimal assay performance, AREX recommends conducting reagent titration tailored to each testing system for optimal detection results.

WB	1:500 - 1:2000
IHC	1:50 - 1:200
IF/ICC	1:50 - 1:200

\*Results are sample-specific. Please refer to your local assay conditions and test parameters for reference.

**PRODUCT OVERVIEW**

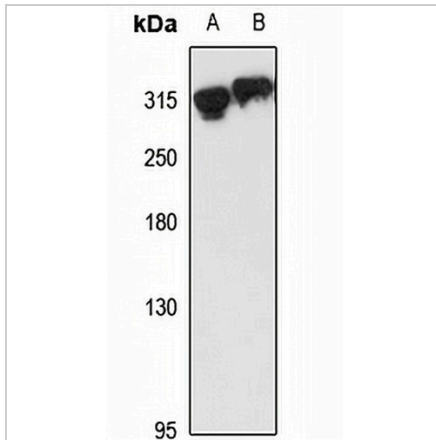
Description	Rabbit polyclonal antibody to CASC5
Specificity	Recognizes endogenous levels of CASC5 protein
Antibody Type	Primary antibody
Immunogen	Recombinant fusion protein of human CASC5. The exact sequence is proprietary.
Purification	The antibody was purified by immunogen affinity chromatography.
Molecular Weight	Predicted: 195; Observed: 300 kD
Form/Buffer	Liquid in 0.42% Potassium phosphate, 0.87% Sodium chloride, pH 7.3, 30% glycerol, and 0.01% sodium azide.
Alternative Names	KIAA1570; KNL1; Protein CASC5; ALL1-fused gene from chromosome 15q14 protein; AF15q14; Bub-linking kinetochore protein; Blinkin; Cancer susceptibility candidate gene 5 protein; Cancer/testis antigen 29; CT29; Kinetochore-null protein 1; Protein D40/AF15q14
Gene Symbol	CASC5
Entrez Gene	57082(Human)
SwissProt	Q8NG31(Human)

\*AREX continuously optimizes our products. Webpage content may not reflect the latest updates. For inquiries, please contact [info@arexbio.com](mailto:info@arexbio.com) or your local distributor.

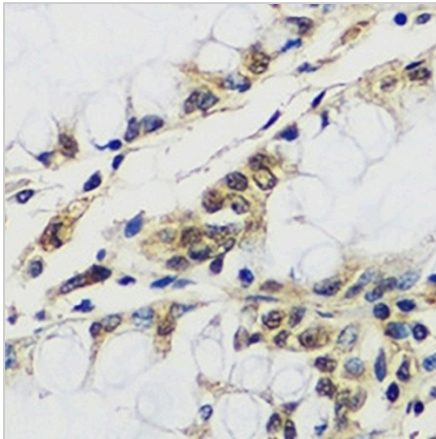
\*Clone Number, Reactivity, Source/Host and Clonality can be found in the product name and Key Features section above.

**DATASHEET****CASC5 Rabbit Polyclonal Antibody**

CAT. NO. APA15214

**DATA**

Western blot analysis of CASC5 expression in U87MG (A), HeLa (B) whole cell lysates. (Predicted band size: 195; 205; 262; 265 kD; Observed band size: 300 kD)



Immunohistochemical analysis of CASC5 staining in human colon formalin fixed paraffin embedded tissue section. The section was pre-treated using heat mediated antigen retrieval with sodium citrate buffer (pH 6.0). The section was then incubated with the antibody at room temperature and detected using an HRP conjugated compact polymer system. DAB was used as the chromogen. The section was then counterstained with haematoxylin and mounted with DPX.

**STORAGE**

Store at 4°C short term. For long term storage, store at -20°C, avoiding freeze/thaw cycles.

**NOTE**

For Research Use Only. Not for diagnostic, therapeutics, prophylactic or in vivo use.