

DATASHEET

c-CBL Rabbit Polyclonal Antibody

CAT. NO. APA15216

KEY FEATURES

| | | | |
|---------------|---|---------------|---------------------|
| Target | c-CBL | Source / Host | Rabbit |
| Reactivity | Human, Mouse, Rat | Clonality | Polyclonal |
| Applications | WB | Conjugation | Unconjugated |
| Form / Buffer | Liquid in 0.42% Potassium phosphate, 0.87% Sodium chloride, pH 7.3, 30% glycerol, and 0.01% sodium azide. | | Storage at -20°C |

BACKGROUND

E3 ubiquitin-protein ligase that acts as a negative regulator of many signaling pathways by mediating ubiquitination of cell surface receptors . Accepts ubiquitin from specific E2 ubiquitin-conjugating enzymes, and then transfers it to substrates promoting their degradation by the proteasome . Recognizes activated receptor tyrosine kinases, including KIT, FLT1, FGFR1, FGFR2, PDGFRA, PDGFRB, CSF1R, EPHA8 and KDR and mediates their ubiquitination to terminate signaling . Recognizes membrane-bound HCK, SRC and other kinases of the SRC family and mediates their ubiquitination and degradation . Ubiquitinates EGFR and SPRY2 .

APPLICATION

To ensure optimal assay performance, AREX recommends conducting reagent titration tailored to each testing system for optimal detection results.

| | |
|----|----------------|
| WB | 1:500 - 1:2000 |
|----|----------------|

*Results are sample-specific. Please refer to your local assay conditions and test parameters for reference.

PRODUCT OVERVIEW

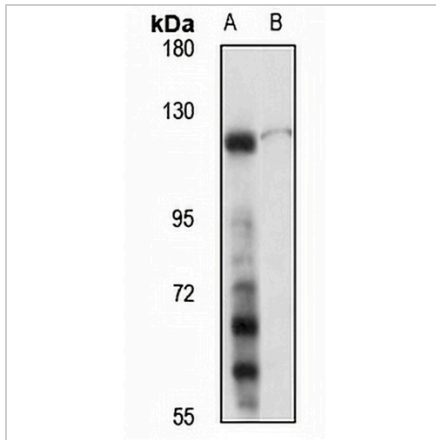
| | |
|-------------------|--|
| Description | Rabbit polyclonal antibody to c-CBL |
| Specificity | Recognizes endogenous levels of c-CBL protein |
| Antibody Type | Primary antibody |
| Immunogen | KLH-conjugated synthetic peptide of human c-CBL. The exact sequence is proprietary. |
| Purification | The antibody was purified by immunogen affinity chromatography. |
| Molecular Weight | Predicted: 99 kD; Observed: 120 kD |
| Form/Buffer | Liquid in 0.42% Potassium phosphate, 0.87% Sodium chloride, pH 7.3, 30% glycerol, and 0.01% sodium azide. |
| Alternative Names | CBL2; RNF55; E3 ubiquitin-protein ligase CBL; Casitas B-lineage lymphoma proto-oncogene; Proto-oncogene c-Cbl; RING finger protein 55; Signal transduction protein CBL |
| Gene Symbol | CBL |
| Entrez Gene | 867(Human); 12402(Mouse) |
| SwissProt | P22681(Human); P22682(Mouse) |

*AREX continuously optimizes our products. Webpage content may not reflect the latest updates. For inquiries, please contact info@arexbio.com or your local distributor.

*Clone Number, Reactivity, Source/Host and Clonality can be found in the product name and Key Features section above.

DATASHEET**c-CBL Rabbit Polyclonal Antibody**

CAT. NO. APA15216

DATA

Western blot analysis of c-CBL expression in Raji (A), mouse thymus (B) whole cell lysates.
(Predicted band size: 99 kD; Observed band size: 120 kD)

STORAGE

Store at 4°C short term. For long term storage, store at -20°C, avoiding freeze/thaw cycles.

NOTE

For Research Use Only. Not for diagnostic, therapeutics, prophylactic or in vivo use.