

**DATASHEET**

**CBLL1 Rabbit Polyclonal Antibody**

CAT. NO. APA15217

**KEY FEATURES**

|               |   |               |                     |
|---------------|---|---------------|---------------------|
| Target        | CBLL1   | Source / Host | Rabbit              |
| Reactivity    | Human, Mouse  | Clonality     | Polyclonal          |
| Applications  | WB  | Conjugation   | Unconjugated        |
| Form / Buffer | Liquid in 0.42% Potassium phosphate, 0.87% Sodium chloride, pH 7.3, 30% glycerol, and 0.01% sodium azide. |               | Storage<br>at -20°C |

**BACKGROUND**

E3 ubiquitin-protein ligase that mediates ubiquitination of several tyrosine-phosphorylated Src substrates, including CDH1, CTTN and DOK1 . Targets CDH1 for endocytosis and degradation . Associated component of the WMM complex, a complex that mediates N6-methyladenosine (m6A) methylation of RNAs, a modification that plays a role in the efficiency of mRNA splicing and RNA processing methylation of RNAs, a modification that plays a role in the efficiency of mRNA splicing and RNA processing . Its function in the WMM complex is unknown .

**APPLICATION**

To ensure optimal assay performance, AREX recommends conducting reagent titration tailored to each testing system for optimal detection results.

|    |                |
|----|----------------|
| WB | 1:500 - 1:2000 |
|----|----------------|

\*Results are sample-specific. Please refer to your local assay conditions and test parameters for reference.

**PRODUCT OVERVIEW**

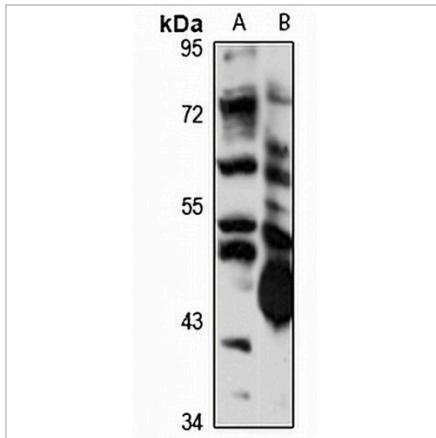
|                   |  |
|-------------------|--|
| Description       | Rabbit polyclonal antibody to CBLL1  |
| Specificity       | Recognizes endogenous levels of CBLL1 protein  |
| Antibody Type     | Primary antibody   |
| Immunogen         | Recombinant fusion protein of human CBLL1. The exact sequence is proprietary.  |
| Purification      | The antibody was purified by immunogen affinity chromatography.  |
| Molecular Weight  | Predicted: 54 kD; Observed: 60 kD  |
| Form/Buffer       | Liquid in 0.42% Potassium phosphate, 0.87% Sodium chloride, pH 7.3, 30% glycerol, and 0.01% sodium azide.  |
| Alternative Names | HAKAI; RNF188; E3 ubiquitin-protein ligase Hakai; Casitas B-lineage lymphoma-transforming sequence-like protein 1; RING finger protein 188; c-Cbl-like protein 1 |
| Gene Symbol       | CBLL1  |
| Entrez Gene       | 79872(Human); 104836(Mouse)  |
| SwissProt         | Q75N03(Human); Q9JIY2(Mouse)   |

\*AREX continuously optimizes our products. Webpage content may not reflect the latest updates. For inquiries, please contact [info@arexbio.com](mailto:info@arexbio.com) or your local distributor.

\*Clone Number, Reactivity, Source/Host and Clonality can be found in the product name and Key Features section above.

**DATASHEET****CBL1 Rabbit Polyclonal Antibody**

CAT. NO. APA15217

**DATA**

Western blot analysis of CBL1 expression in mouse brain (A), mouse lung (B) whole cell lysates. (Predicted band size: 54 kD; Observed band size: 60 kD)

**STORAGE**

Store at 4°C short term. For long term storage, store at -20°C, avoiding freeze/thaw cycles.

**NOTE**

For Research Use Only. Not for diagnostic, therapeutics, prophylactic or in vivo use.