

DATASHEET

HP1 beta Rabbit Polyclonal Antibody

CAT. NO. APA15218

KEY FEATURES

Target	HP1 beta	Source / Host	Rabbit
Reactivity	Human	Clonality	Polyclonal
Applications	WB	Conjugation	Unconjugated
Form / Buffer	Liquid in 0.42% Potassium phosphate, 0.87% Sodium chloride, pH 7.3, 30% glycerol, and 0.01% sodium azide.		Storage at -20°C

BACKGROUND

Component of heterochromatin, which recognizes and binds histone H3 tails methylated at 'Lys-9', leading to epigenetic repression. Also recognizes and binds histone H1.4 methylated at 'Lys-26' (H1.4K26me). Excluded from chromatin when histone H1.4 is Simultaneously methylated at Lys-26 (H1.4K26me) and phosphorylated at Ser-27 (H1.4S27Ph). Interaction with lamin B receptor (LBR) can contribute to the association of the heterochromatin with the inner nuclear membrane.

APPLICATION

To ensure optimal assay performance, AREX recommends conducting reagent titration tailored to each testing system for optimal detection results.

WB	1:500 - 1:1000
----	----------------

*Results are sample-specific. Please refer to your local assay conditions and test parameters for reference.

PRODUCT OVERVIEW

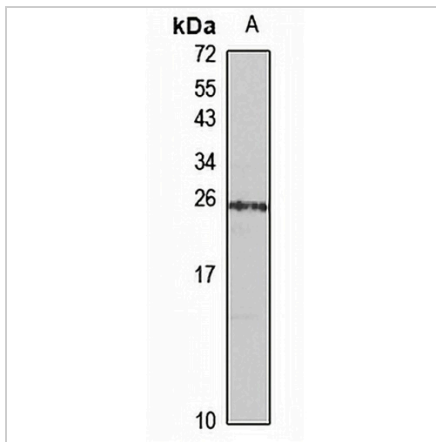
Description	Rabbit polyclonal antibody to HP1 beta
Specificity	Recognizes endogenous levels of HP1 beta protein
Antibody Type	Primary antibody
Immunogen	Recombinant fusion protein of human HP1 beta. The exact sequence is proprietary.
Purification	The antibody was purified by immunogen affinity chromatography.
Molecular Weight	Predicted: 21 kD; Observed: 21 kD
Form/Buffer	Liquid in 0.42% Potassium phosphate, 0.87% Sodium chloride, pH 7.3, 30% glycerol, and 0.01% sodium azide.
Alternative Names	CBX; Chromobox protein homolog 1; HP1Hsbeta; Heterochromatin protein 1 homolog beta; HP1 beta; Heterochromatin protein p25; M31; Modifier 1 protein; p25beta
Gene Symbol	CBX1
Entrez Gene	10951(Human)
SwissProt	P83916(Human)

*AREX continuously optimizes our products. Webpage content may not reflect the latest updates. For inquiries, please contact info@arexbio.com or your local distributor.

*Clone Number, Reactivity, Source/Host and Clonality can be found in the product name and Key Features section above.

DATASHEET**HP1 beta Rabbit Polyclonal Antibody**

CAT. NO. APA15218

DATA

Western blot analysis of HP1 beta expression in OVCAR3 (A) whole cell lysates. (Predicted band size: 21 kD; Observed band size: 21 kD)

STORAGE

Store at 4°C short term. For long term storage, store at -20°C, avoiding freeze/thaw cycles.

NOTE

For Research Use Only. Not for diagnostic, therapeutics, prophylactic or in vivo use.