

## DATASHEET

# CCDC61 Rabbit Polyclonal Antibody

CAT. NO. APA15224

### KEY FEATURES

Target	CCDC61	Source / Host	Rabbit
Reactivity	Human	Clonality	Polyclonal
Applications	WB	Conjugation	Unconjugated
Form / Buffer	Liquid in 0.42% Potassium phosphate, 0.87% Sodium chloride, pH 7.3, 30% glycerol, and 0.01% sodium azide.		Storage at-20°C

### BACKGROUND

Microtubule-binding centrosomal protein required for centriole cohesion, independently of the centrosome-associated protein/CEP250 and rootletin/CROCC linker . In interphase, required for anchoring microtubule at the mother centriole subdistal appendages and for centrosome positioning . During mitosis, may be involved in spindle assembly and chromatin alignment by regulating the organization of spindle microtubules into a symmetrical structure . Has been proposed to play a role in CEP170 recruitment to centrosomes . However, this function could not be confirmed . Plays a non-essential role in ciliogenesis .

### APPLICATION

To ensure optimal assay performance, AREX recommends conducting reagent titration tailored to each testing system for optimal detection results.

WB	1:500 - 1:2000
----	----------------

\*Results are sample-specific. Please refer to your local assay conditions and test parameters for reference.

### PRODUCT OVERVIEW

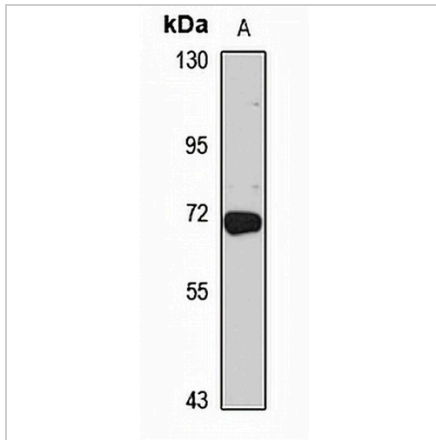
Description	Rabbit polyclonal antibody to CCDC61
Specificity	Recognizes endogenous levels of CCDC61 protein
Antibody Type	Primary antibody
Immunogen	Recombinant fusion protein of human CCDC61. The exact sequence is proprietary.
Purification	The antibody was purified by immunogen affinity chromatography.
Molecular Weight	Predicted: 37; Observed: 57 kD
Form/Buffer	Liquid in 0.42% Potassium phosphate, 0.87% Sodium chloride, pH 7.3, 30% glycerol, and 0.01% sodium azide.
Alternative Names	Coiled-coil domain-containing protein 61
Gene Symbol	CCDC61
Entrez Gene	729440(Human)
SwissProt	Q9Y6R9(Human)

\*AREX continuously optimizes our products. Webpage content may not reflect the latest updates. For inquiries, please contact [info@arexbio.com](mailto:info@arexbio.com) or your local distributor.

\*Clone Number, Reactivity, Source/Host and Clonality can be found in the product name and Key Features section above.

**DATASHEET****CCDC61 Rabbit Polyclonal Antibody**

CAT. NO. APA15224

**DATA**

Western blot analysis of CCDC61 expression in Jurkat (A) whole cell lysates. (Predicted band size: 37; 57 kD; Observed band size: 57 kD)

**STORAGE**

Store at 4°C short term. For long term storage, store at -20°C, avoiding freeze/thaw cycles.

**NOTE**

For Research Use Only. Not for diagnostic, therapeutics, prophylactic or in vivo use.